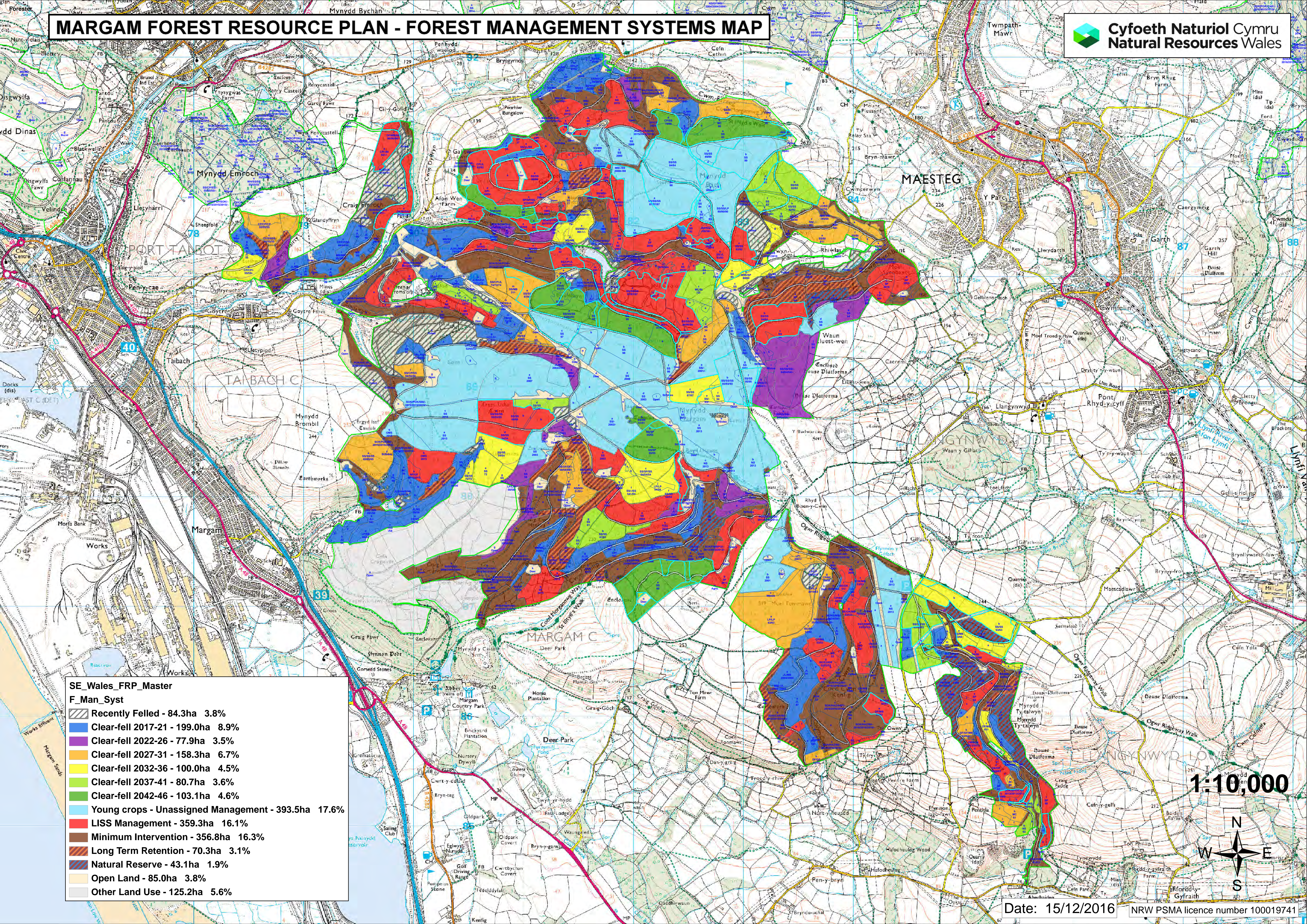


MARGAM FOREST RESOURCE PLAN - FOREST MANAGEMENT SYSTEMS MAP



SE_Wales_FRP_Master
F_Man_Syst

	Recently Felled - 84.3ha	3.8%
	Clear-fell 2017-21 - 199.0ha	8.9%
	Clear-fell 2022-26 - 77.9ha	3.5%
	Clear-fell 2027-31 - 158.3ha	6.7%
	Clear-fell 2032-36 - 100.0ha	4.5%
	Clear-fell 2037-41 - 80.7ha	3.6%
	Clear-fell 2042-46 - 103.1ha	4.6%
	Young crops - Unassigned Management - 393.5ha	17.6%
	LISS Management - 359.3ha	16.1%
	Minimum Intervention - 356.8ha	16.3%
	Long Term Retention - 70.3ha	3.1%
	Natural Reserve - 43.1ha	1.9%
	Open Land - 85.0ha	3.8%
	Other Land Use - 125.2ha	5.6%

1:10,000

