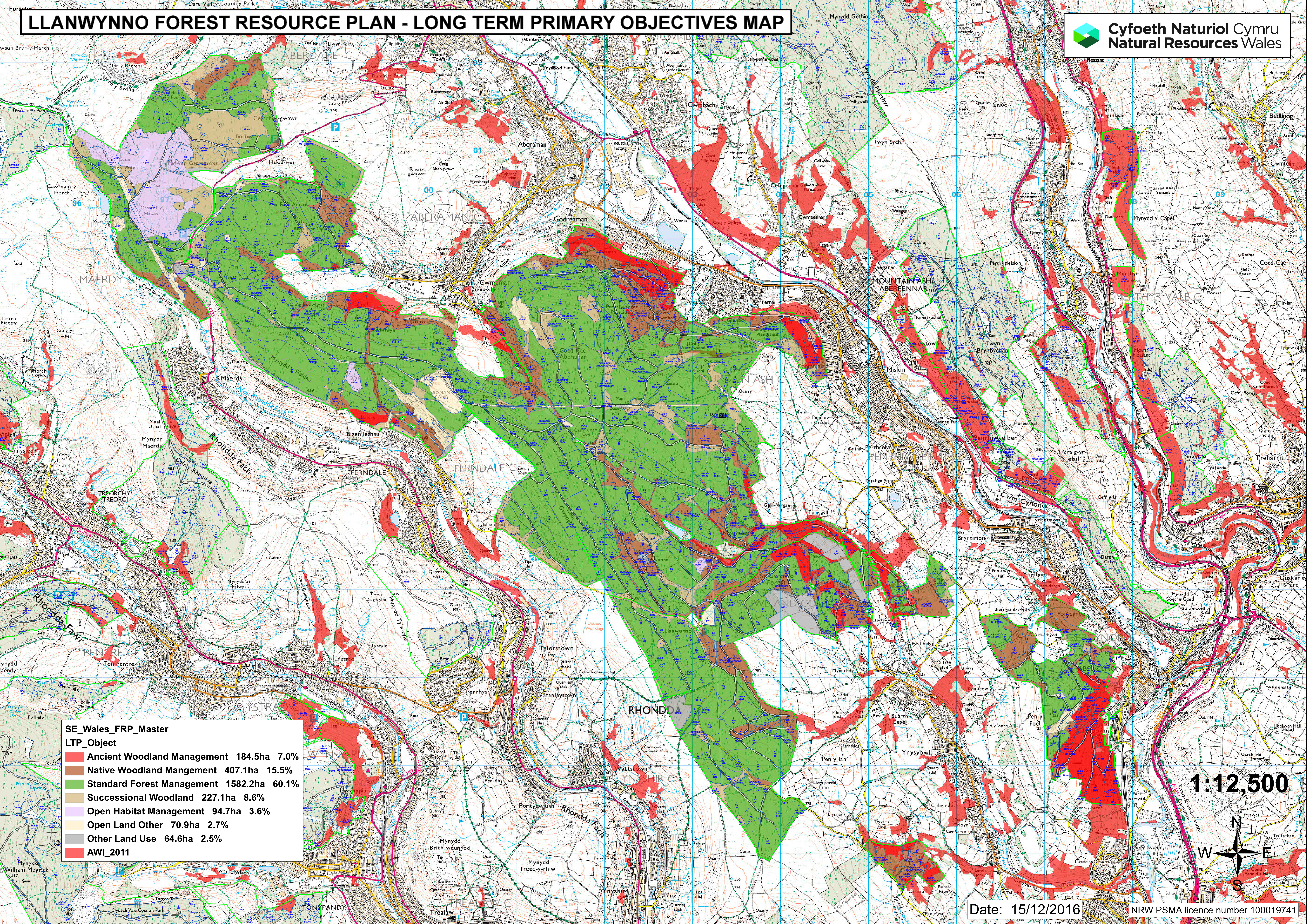


# LLANWYNNO FOREST RESOURCE PLAN - LONG TERM PRIMARY OBJECTIVES MAP



**SE\_Wales\_FRP\_Master**  
**LTP\_Object**

<span style="color: red;">■</span> Ancient Woodland Management	184.5ha	7.0%
<span style="color: brown;">■</span> Native Woodland Mangement	407.1ha	15.5%
<span style="color: green;">■</span> Standard Forest Management	1582.2ha	60.1%
<span style="color: purple;">■</span> Successional Woodland	227.1ha	8.6%
<span style="color: yellow;">■</span> Open Land Other	70.9ha	2.7%
<span style="color: grey;">■</span> Other Land Use	64.6ha	2.5%
<span style="color: red;">■</span> AWI_2011		

1:12,500

