

## Dyfroedd Pysgod Cregyn a Ddiogelir

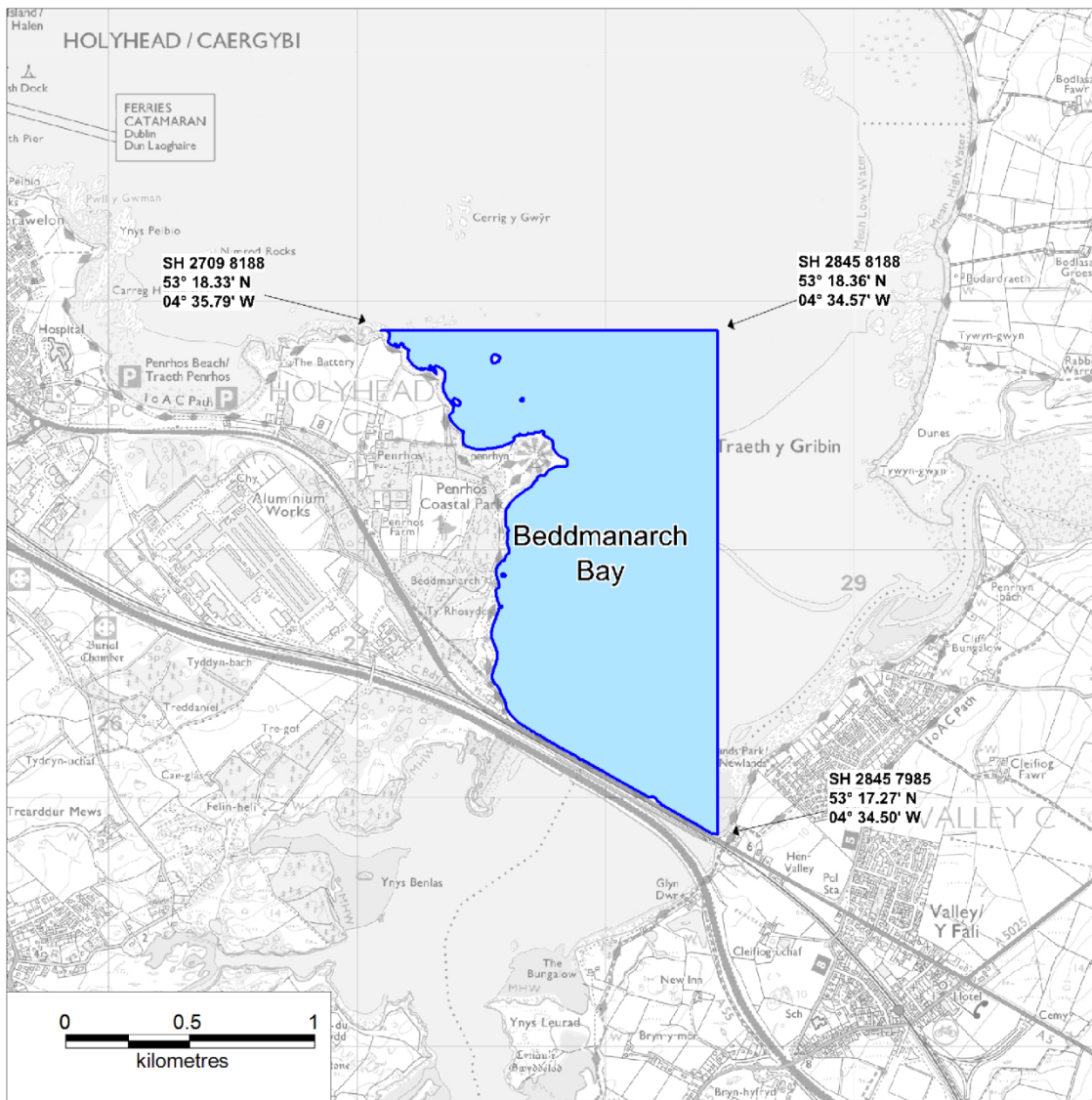
Mae'r Gyfarwyddeb Fframwaith Ddŵr yn gofyn am fanyleb o ardaloedd gwarchodedig ar gyfer yr ardaloedd hynny a ddynodwyd ar gyfer gwarchod rhywogaethau sy'n bwysig yn economaidd. Mae'r rhestr hon yn cynnwys yr ardaloedd gwarchodedig hynny a ddynodwyd yn flaenorol o dan Gyfarwyddeb Dyfroedd Pysgod Cregyn, a ddiddymwyd, ac sydd bellach wedi'u nodi o dan y Gyfarwyddeb Fframwaith Dŵr.

Mae'r rhestr hon yn cynnwys yr hyn gyfeiriwyd ato o dan y Rheoliadau'r Amgylchedd Dŵr (Y Gyfarwyddeb Fframwaith Dŵr) (Cymru a Lloegr) (Diwygio) 2016' sy'n dod i rym ar 3 Mawrth 2016. Yn unol â'r rheoliadau uchod, mae'r rhestr yn disodli'r hysbysiad a ddarparwyd i Cyfoeth Naturiol Cymru o dan y ddeddfwriaeth flaenorol, a elwid yn 'Hysbysiad Dyfroedd Pysgod Cregyn (Cymru) 2013'

### **ATODLEN**

Dyfroedd lled hallt ac arfordirol yng Nghymru sy'n perthyn i'r dosbarthiad Dyfroedd Pysgod Cregyn

# Beddmanarch Bay - Shellfish Water



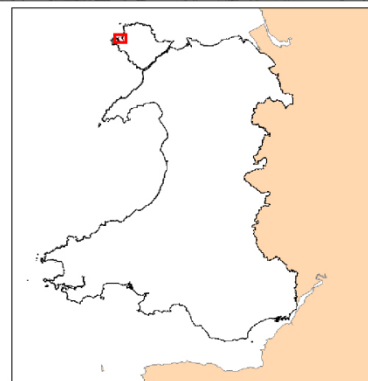
 Designated Shellfish Water

The Water Environment  
(Water Framework Directive)  
(England and Wales) (Amendment)  
Regulations 2016

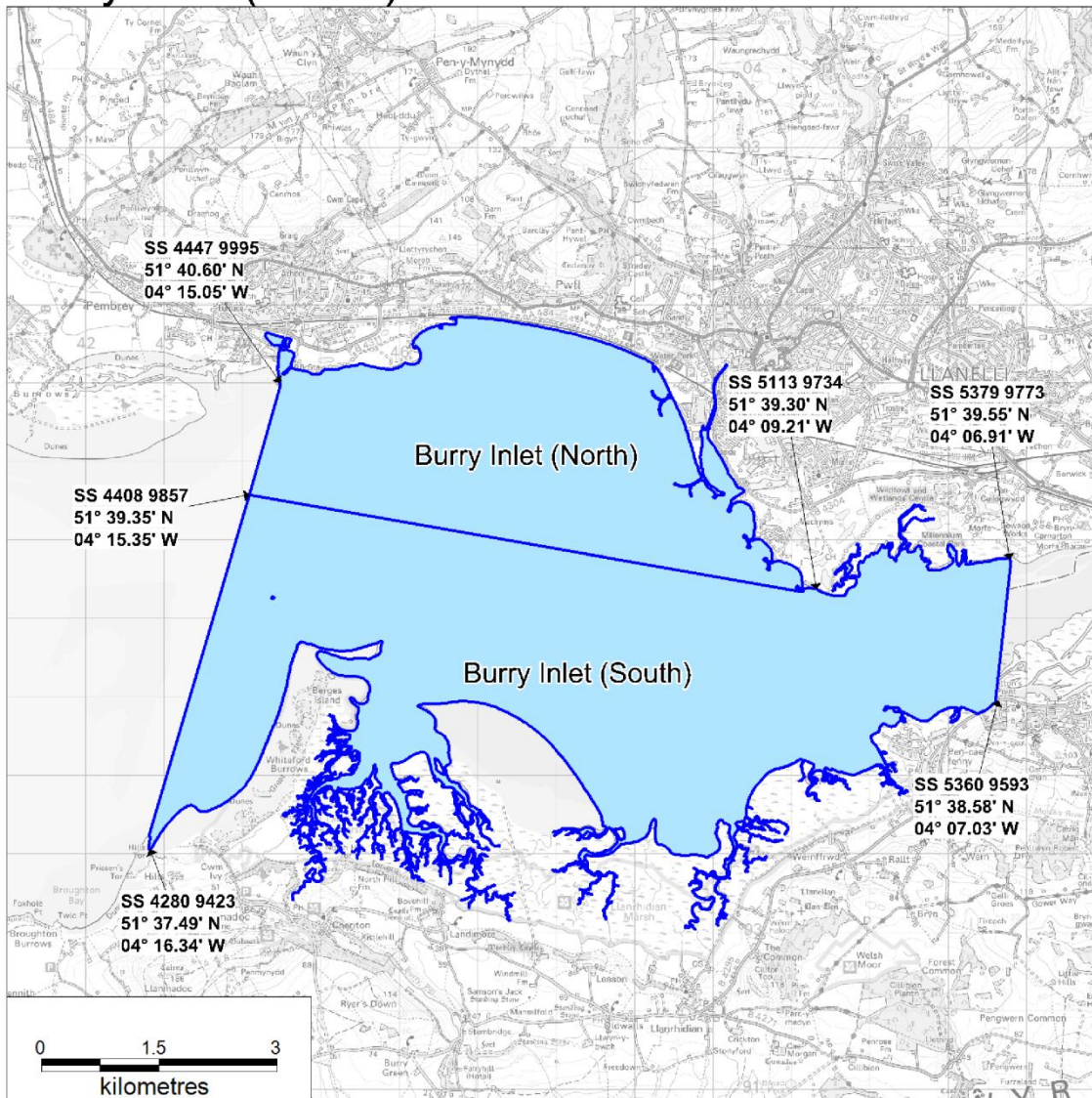
Map as produced by Cefas for the purposes of the  
Surface Waters (Shellfish) (Classification) (Amendment) Regulations 2009

© Crown Copyright and Database 2013. All rights reserved.  
Ordnance Survey licence number 10000356745

© Hawlfraint a hawliau cronfa ddata'r Goron 2013. Cedwir pob hawl.  
Rhif Trwydded yr Arolwg Ordnans 10000356745



# Burry Inlet (North), Burry Inlet (South) - Shellfish Waters



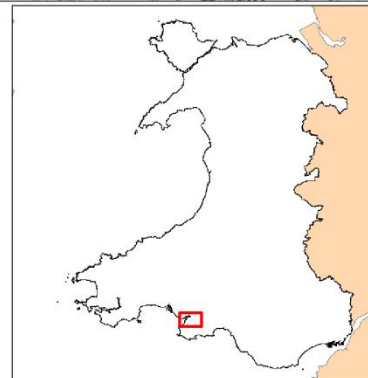
 Designated Shellfish Water

The Water Environment  
(Water Framework Directive)  
(England and Wales) (Amendment)  
Regulations 2016

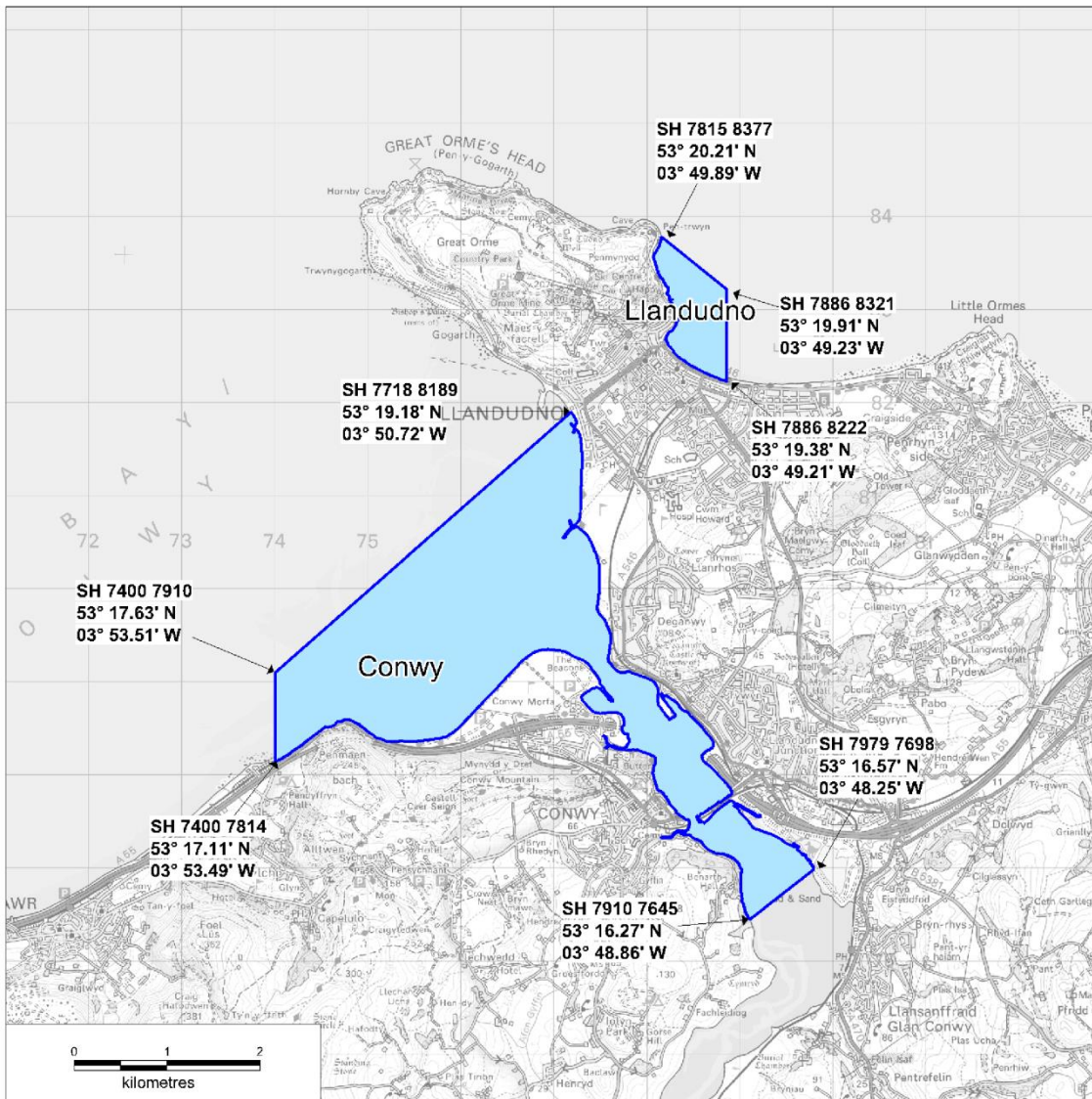
Map as produced by Cefas for the purposes of the  
Surface Waters (Shellfish) (Classification) (Amendment) Regulations 2009

© Crown Copyright and Database 2013. All rights reserved.  
Ordnance Survey licence number 10000356745

© Hawlfraint a hawliau cronfa ddata'r Goron 2013. Cedwir pob hawl.  
Rhif Trwydded yr Arolwg Ordnans 10000356745



# Conwy, Llandudno - Shellfish Waters



 Designated Shellfish Water

The Water Environment  
(Water Framework Directive)  
(England and Wales) (Amendment)  
Regulations 2016

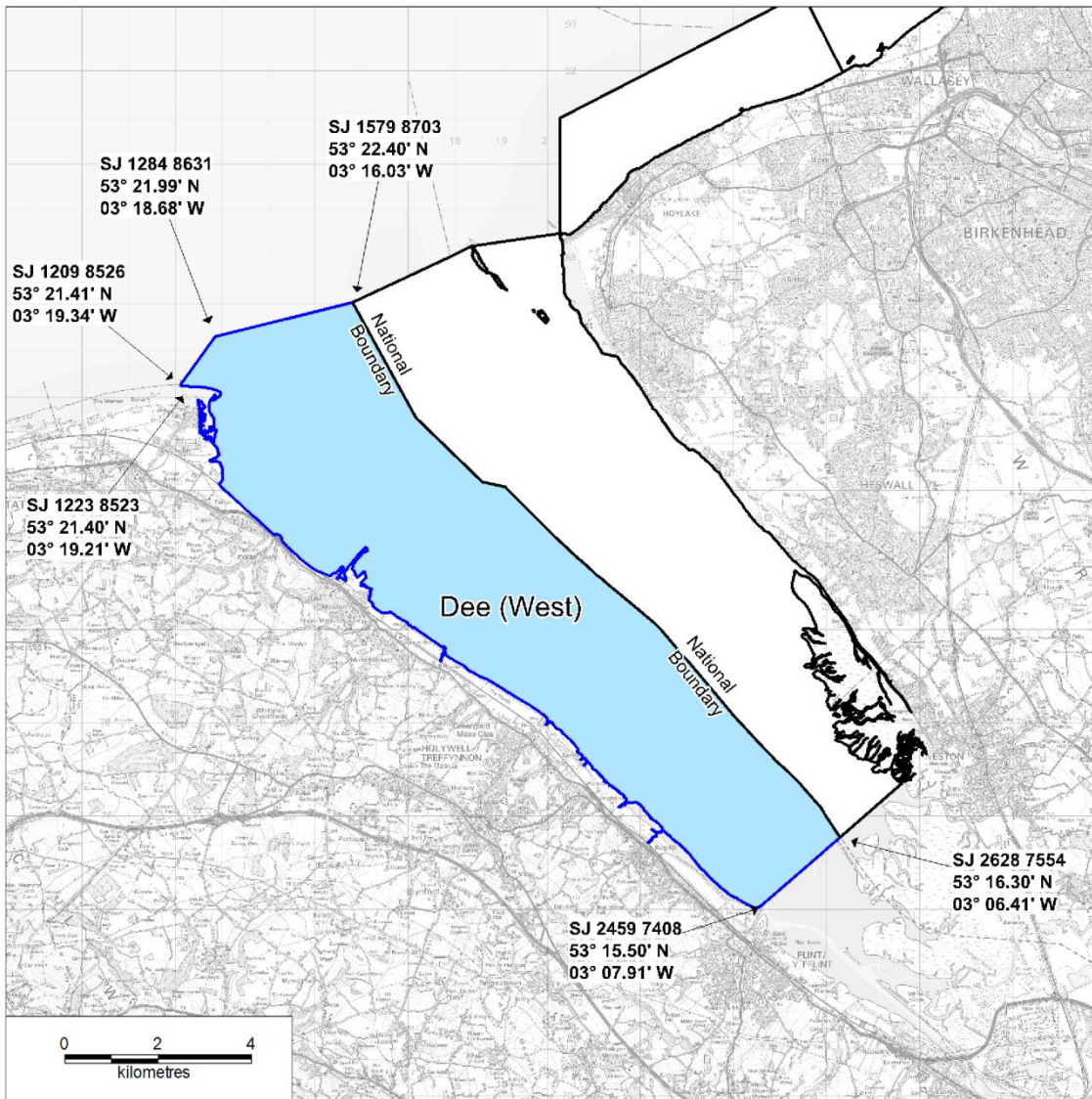
Map as produced by Cefas for the purposes of the  
Surface Waters (Shellfish) (Classification) (Amendment) Regulations 2009

© Crown Copyright and Database 2013. All rights reserved.  
Ordnance Survey licence number 10000356745

© Hawlfraint a hawliau cronfa ddata'r Goron 2013. Cedwir pob hawl.  
Rhif Trwydded yr Arolwg Ordnans 10000356745



# Dee (West) - Shellfish Water



 Designated Shellfish Water

The Water Environment  
(Water Framework Directive)  
(England and Wales) (Amendment)  
Regulations 2016

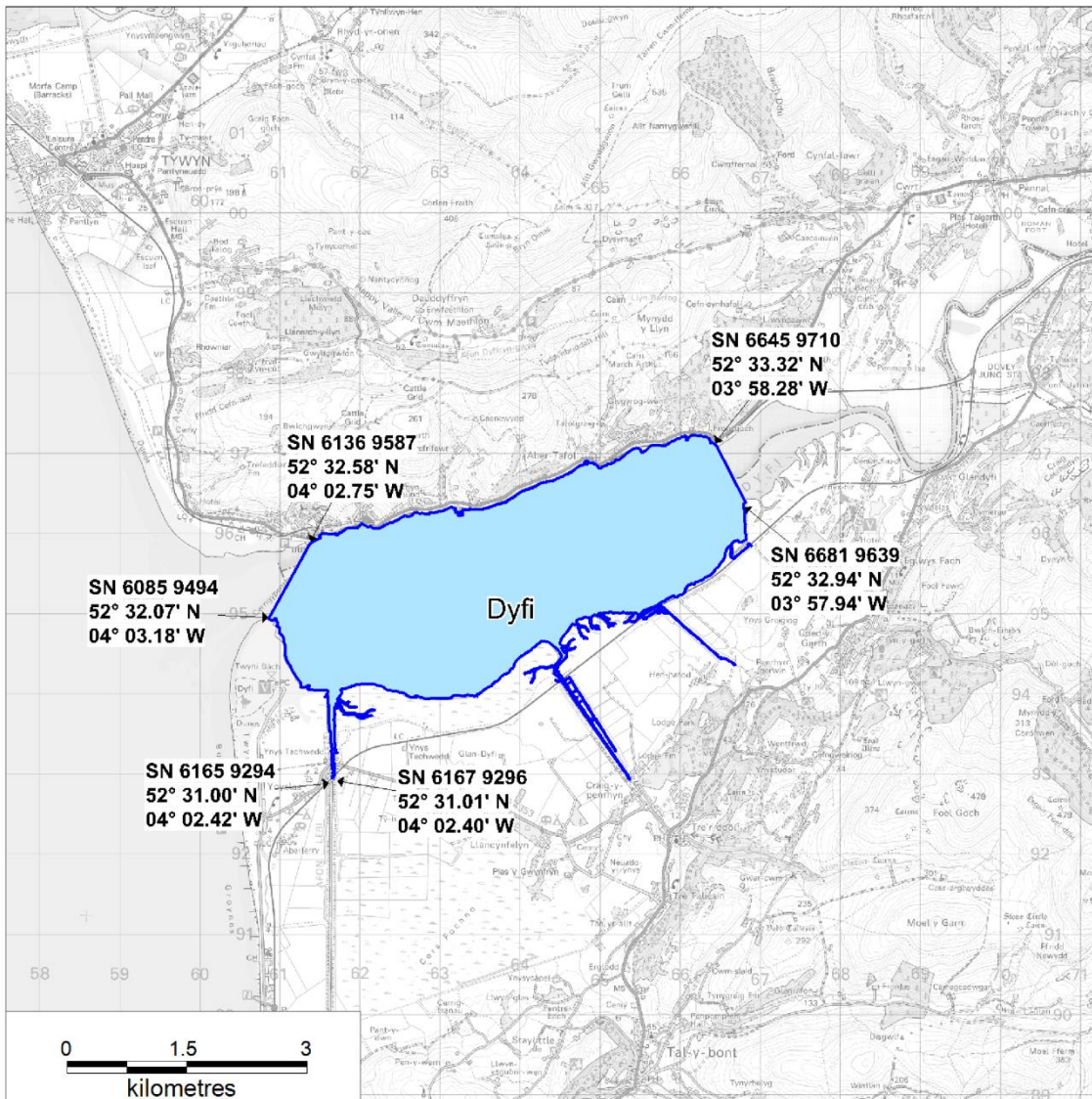
Map as produced by Cefas for the purposes of the  
Surface Waters (Shellfish) (Classification) (Amendment) Regulations 2009

© Crown Copyright and Database 2013. All rights reserved.  
Ordnance Survey licence number 10000356745

© Hawlfraint a hawliau cronfa ddata'r Goron 2013. Cedwir pob hawl.  
Rhif Trwydded yr Arolwg Ordnans 10000356745



# Dyfi (Dovey) - Shellfish Water



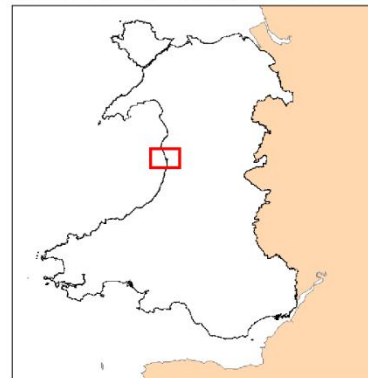
 Designated Shellfish Water

The Water Environment  
(Water Framework Directive)  
(England and Wales) (Amendment)  
Regulations 2016

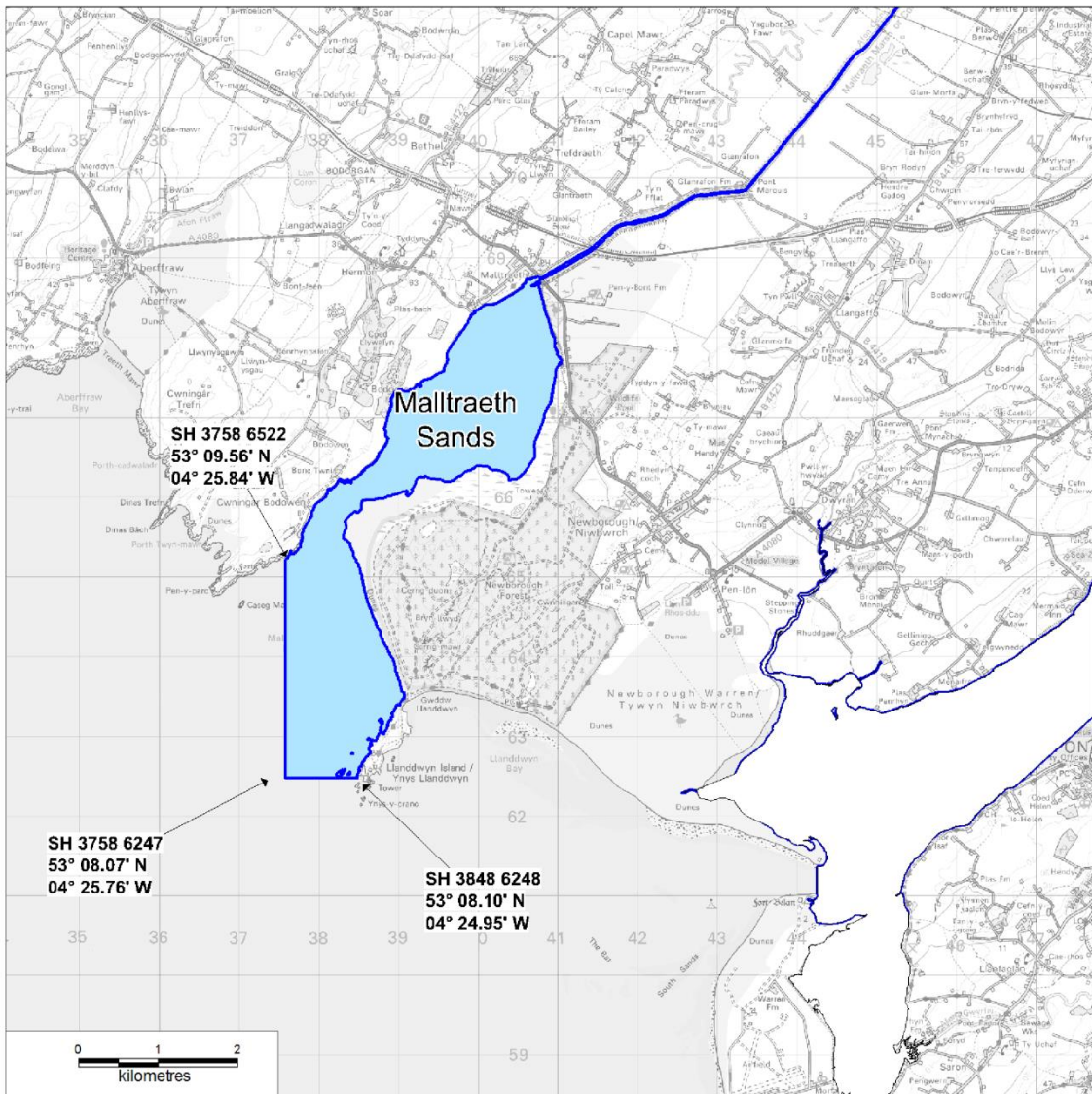
Map as produced by Cefas for the purposes of the  
Surface Waters (Shellfish) (Classification) (Amendment) Regulations 2009

© Crown Copyright and Database 2013. All rights reserved.  
Ordnance Survey licence number 10000356745

© Hawlfraint a hawliau cronfa ddata'r Goron 2013. Cedwir pob hawl.  
Rhif Trwydded yr Arolwg Ordnans 10000356745



# Malltraeth Sands - Shellfish Water



 Designated Shellfish Water

The Water Environment  
(Water Framework Directive)  
(England and Wales) (Amendment)  
Regulations 2016

Map as produced by Cefas for the purposes of the  
Surface Waters (Shellfish) (Classification) (Amendment) Regulations 2009

© Crown Copyright and Database 2013. All rights reserved.  
Ordnance Survey licence number 10000356745

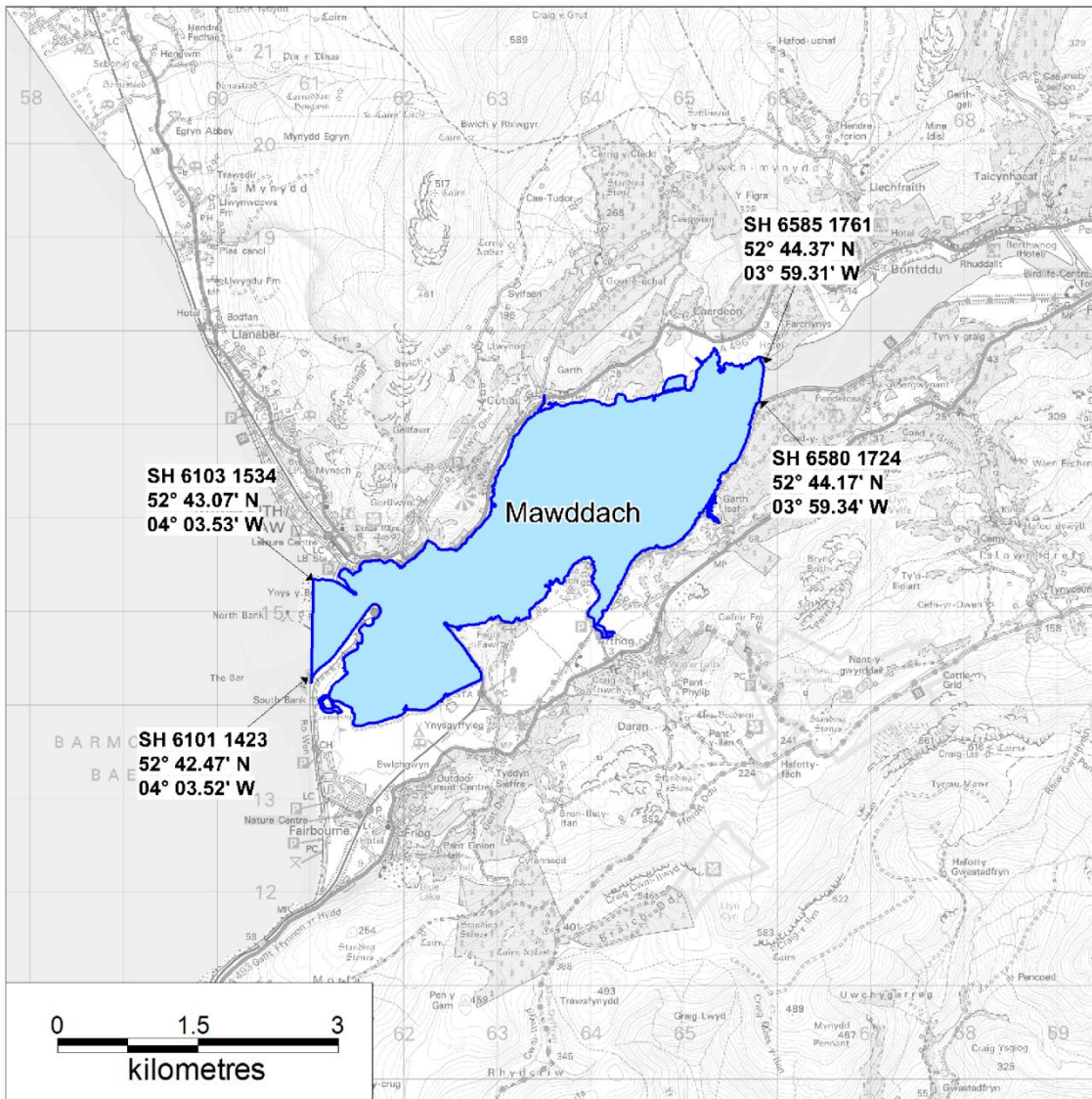
© Hawlfraint a hawliau cronfa ddata'r Goron 2013. Cedwir pob hawl.  
Rhif Trwydded yr Arolwg Ordnans 10000356745



Llywodraeth Cymru  
Welsh Government



# Mawddach- Shellfish Water



 Designated Shellfish Water

The Water Environment  
(Water Framework Directive)  
(England and Wales) (Amendment)  
Regulations 2016

Map as produced by Cefas for the purposes of the  
Surface Waters (Shellfish) (Classification) (Amendment) Regulations 2009

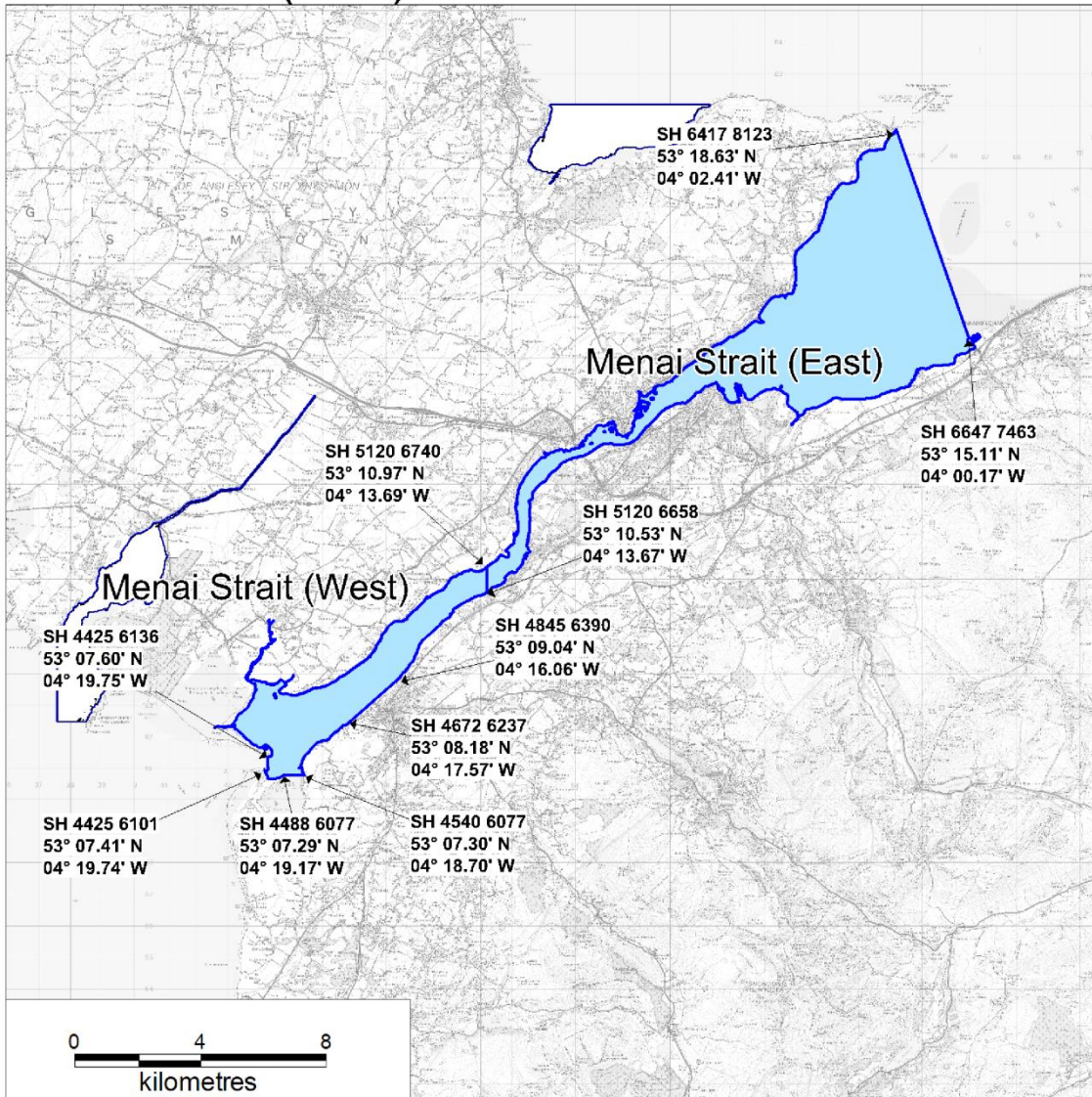
© Crown Copyright and Database 2013. All rights reserved.  
Ordnance Survey licence number 10000356745

© Hawlfraint a hawliau cronfa ddata'r Goron 2013. Cedwir pob hawl.  
Rhif Trwydded yr Arolwg Ordnans 10000356745





# Menai Strait (West), Menai Strait (East) - Shellfish Waters



 Designated Shellfish Water

The Water Environment  
(Water Framework Directive)  
(England and Wales) (Amendment)  
Regulations 2016

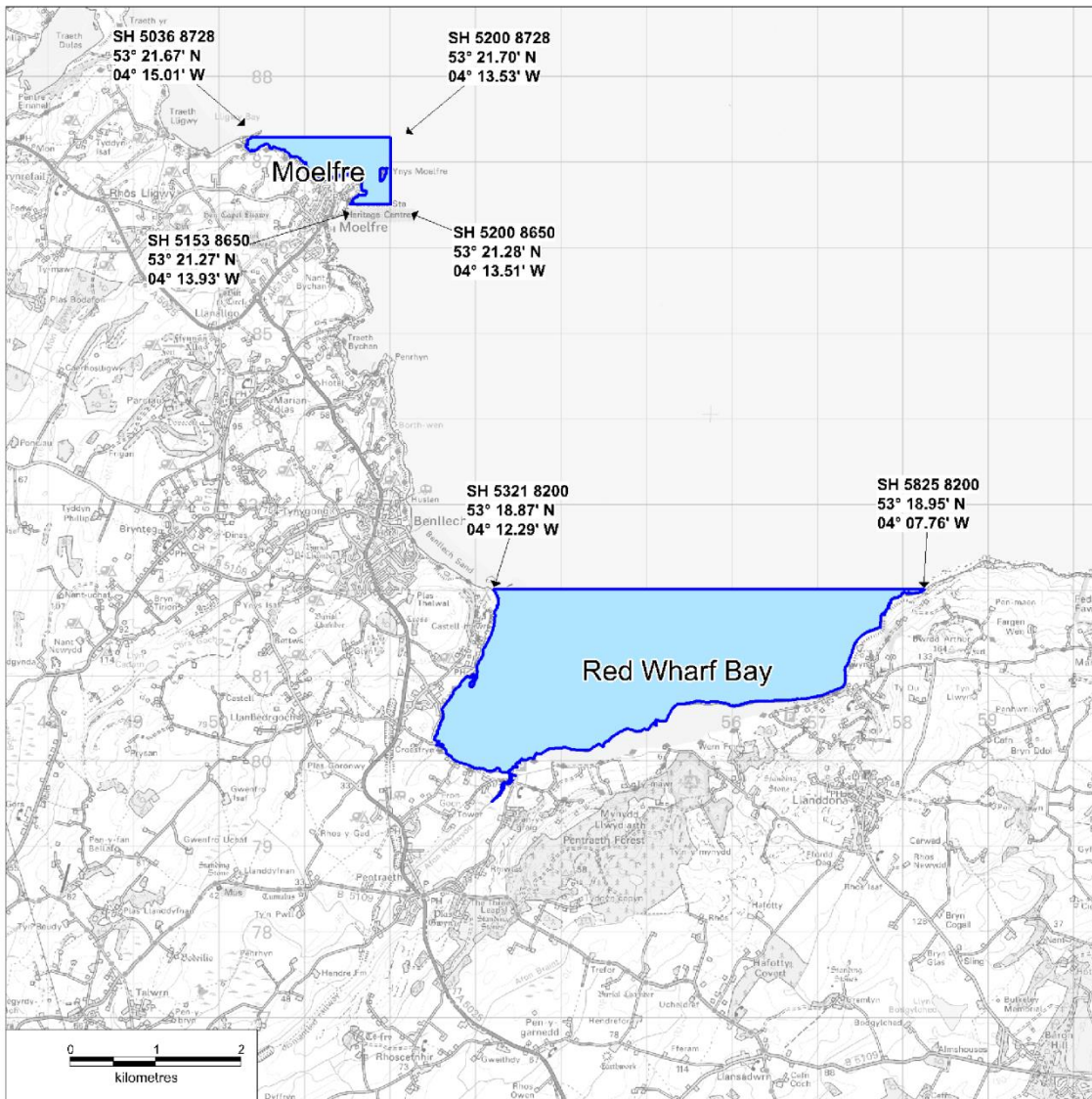
Map as produced by Cefas for the purposes of the  
Surface Waters (Shellfish) (Classification) (Amendment) Regulations 2009

© Crown Copyright and Database 2013. All rights reserved.  
Ordnance Survey licence number 10000356745

© Hawlfraint a hawliau cronfa ddata'r Goron 2013. Cedwir pob hawl.  
Rhif Trwydded yr Arolwg Ordnans 10000356745



# Red Wharf Bay, Moelfre - Shellfish Waters



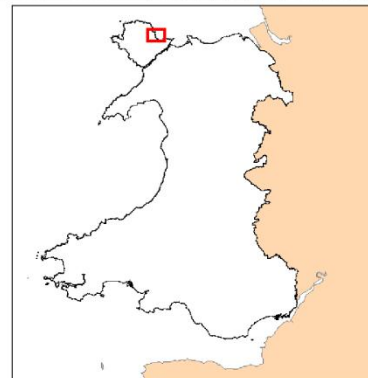
 Designated Shellfish Water

The Water Environment  
(Water Framework Directive)  
(England and Wales) (Amendment)  
Regulations 2016

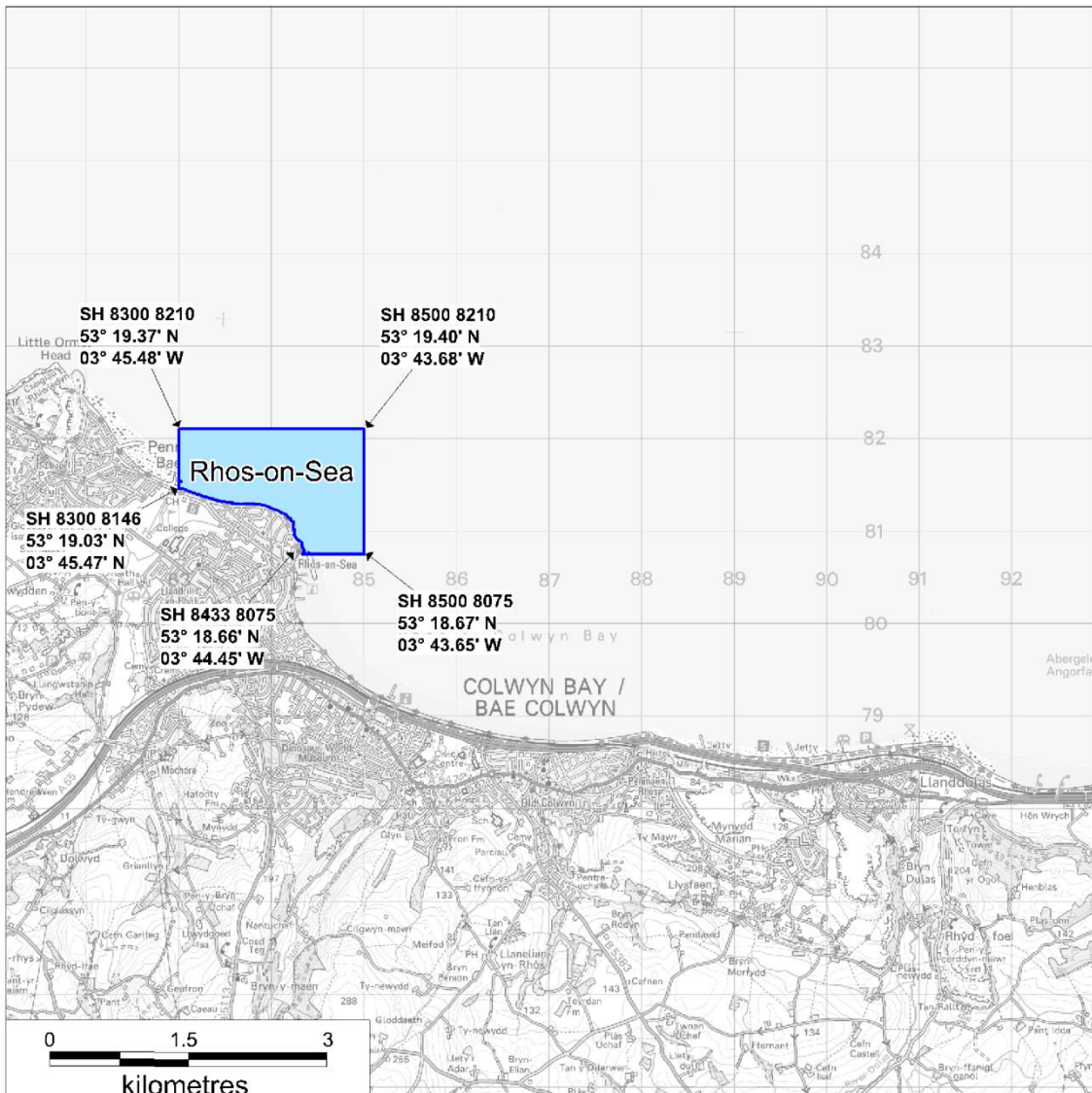
Map as produced by Cefas for the purposes of the  
Surface Waters (Shellfish) (Classification) (Amendment) Regulations 2009

© Crown Copyright and Database 2013. All rights reserved.  
Ordnance Survey licence number 10000356745

© Hawlfraint a hawliau cronfa ddata'r Goron 2013. Cedwir pob hawl.  
Rhif Trwydded yr Arolwg Ordnans 10000356745



# Rhos-on-Sea - Shellfish Water



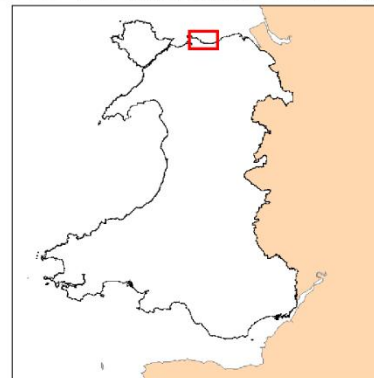
 Designated Shellfish Water

The Water Environment  
(Water Framework Directive)  
(England and Wales) (Amendment)  
Regulations 2016

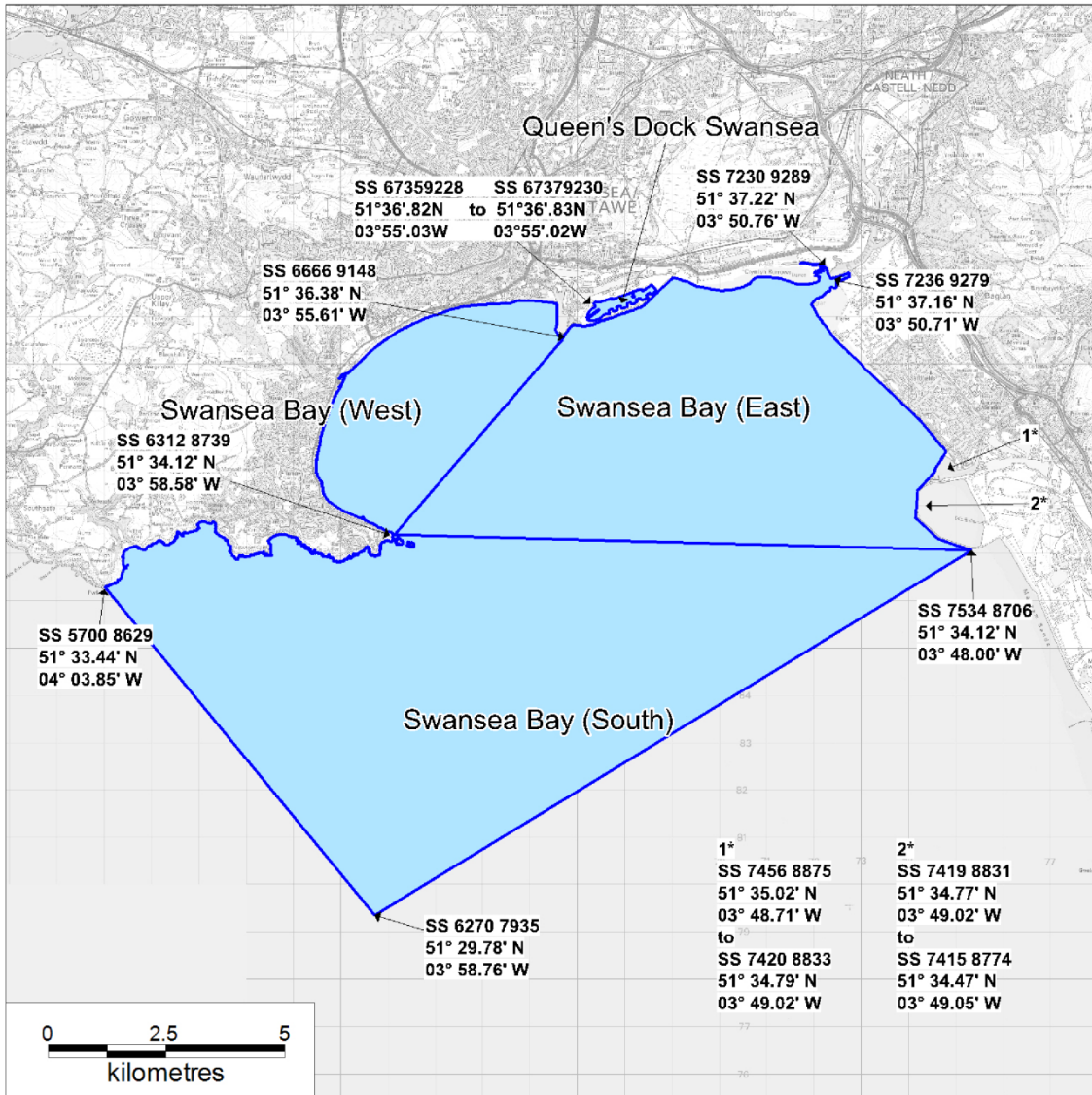
Map as produced by Cefas for the purposes of the  
Surface Waters (Shellfish) (Classification) (Amendment) Regulations 2009

© Crown Copyright and Database 2013. All rights reserved.  
Ordnance Survey licence number 10000356745

© Hawlfraint a hawliau cronfa ddata'r Goron 2013. Cedwir pob hawl.  
Rhif Trwydded yr Arolwg Ordnans 10000356745



Swansea Bay (East), Swansea Bay (South)  
 Swansea Bay (West), Queen's Dock Swansea - Shellfish Waters



Designated Shellfish Water

The Water Environment  
 (Water Framework Directive)  
 (England and Wales) (Amendment)  
 Regulations 2016

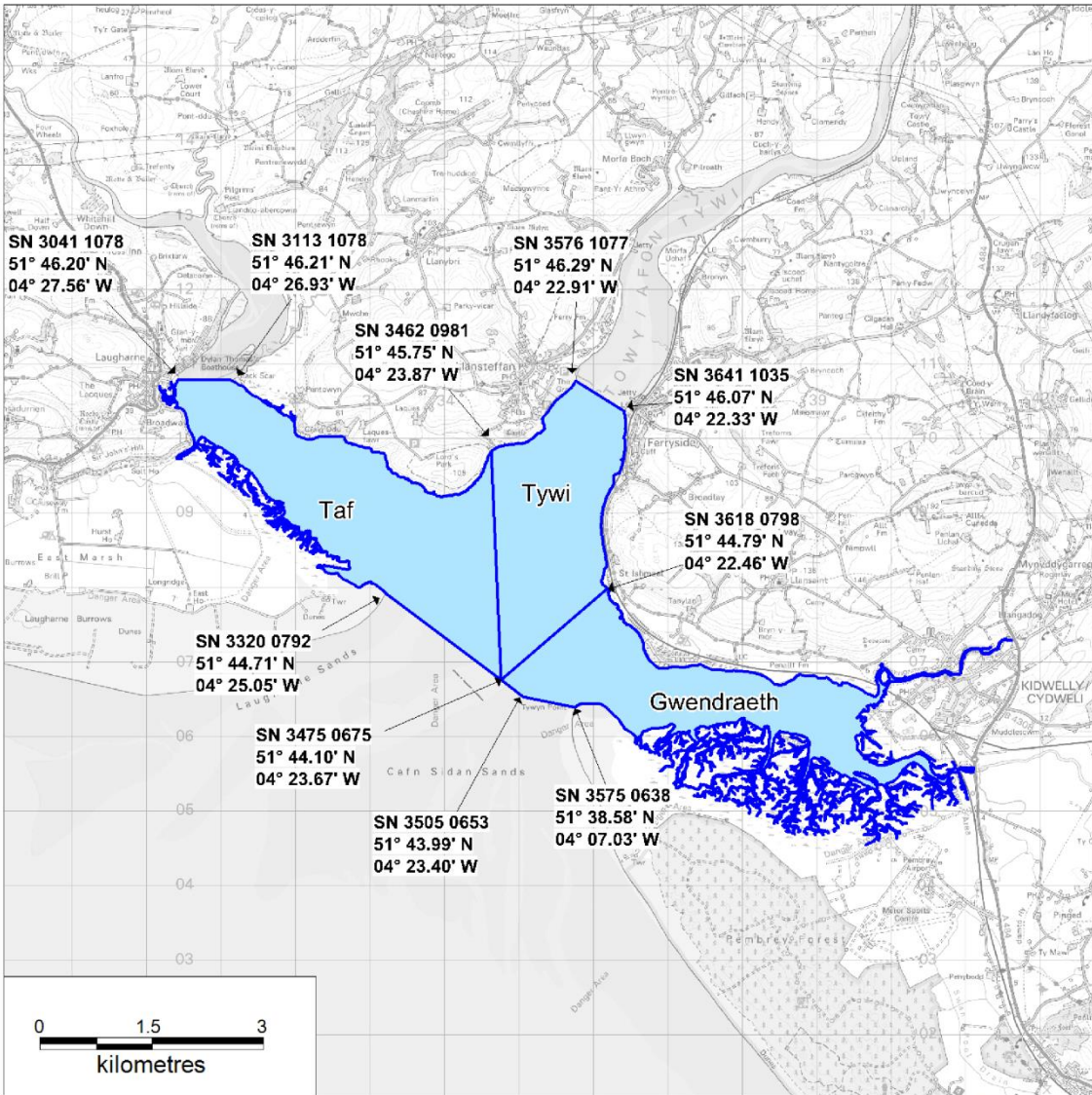
Map as produced by Cefas for the purposes of the  
 Surface Waters (Shellfish) (Classification) (Amendment) Regulations 2009

© Crown Copyright and Database 2013. All rights reserved.  
 Ordnance Survey licence number 10000356745

© Hawlfraint a hawliau cronfa ddata'r Goron 2013. Cedwir pob hawl.  
 Rhif Trwydded yr Arolwg Ordnans 10000356745



# Gwendraeth, Tywi, Taf - Shellfish Waters



 Designated Shellfish Water

The Water Environment  
(Water Framework Directive)  
(England and Wales) (Amendment)  
Regulations 2016

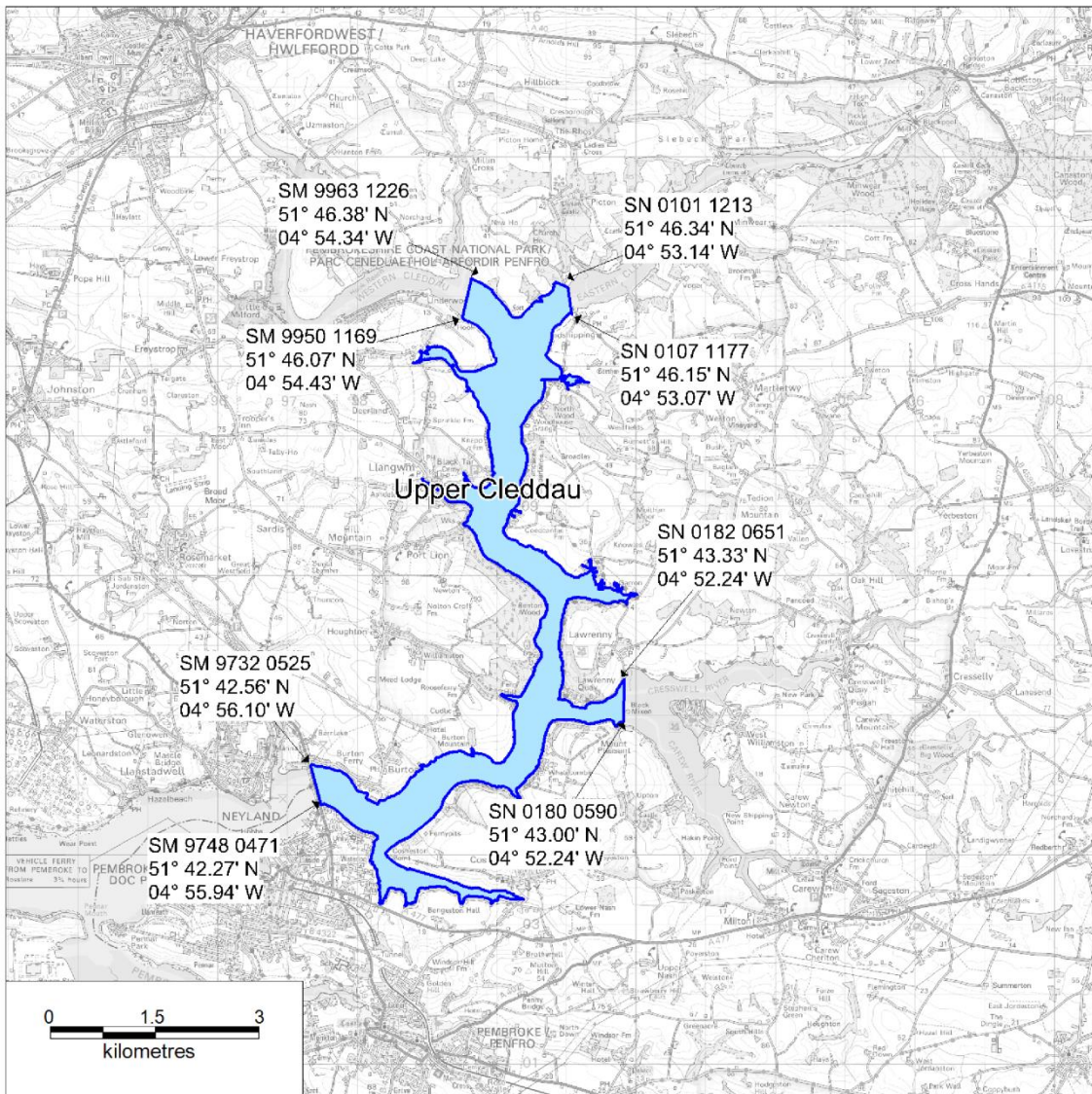
Map as produced by Cefas for the purposes of the  
Surface Waters (Shellfish) (Classification) (Amendment) Regulations 2009

© Crown Copyright and Database 2013. All rights reserved.  
Ordnance Survey licence number 10000356745

© Hawlfraint a hawliau cronfa ddata'r Goron 2013. Cedwir pob hawl.  
Rhif Trwydded yr Arolwg Ordnans 10000356745



# Upper Cleddau - Shellfish Water



 Designated Shellfish Water

The Water Environment  
(Water Framework Directive)  
(England and Wales) (Amendment)  
Regulations 2016

Map as produced by Cefas for the purposes of the  
Surface Waters (Shellfish) (Classification) (Amendment) Regulations 2009

© Crown Copyright and Database 2013. All rights reserved.  
Ordnance Survey licence number 10000356745

© Hawlfraint a hawliau cronfa ddata'r Goron 2013. Cedwir pob hawl.  
Rhif Trwydded yr Arolwg Ordnans 10000356745

