

Shellfish Water Protected Areas

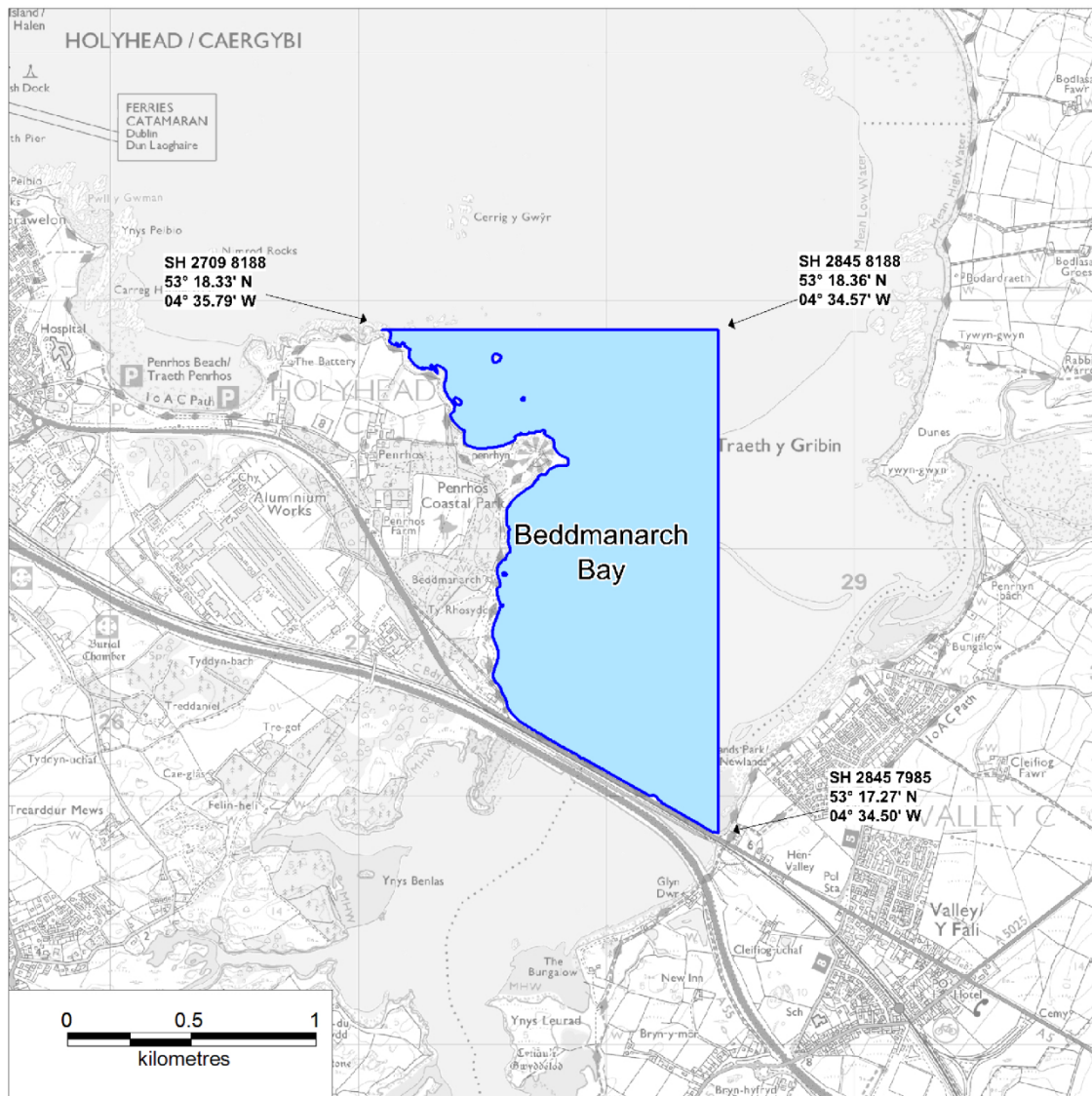
The Water Framework Directive requires specification of protected areas for those areas designated for the protection of economically significant species. This list are those protected areas previously designated under the repealed Shellfish Waters Directive which are now specified under the Water Framework Directive.

This list constitutes that which is referred to under 'The Water Environment (Water Framework Directive) (England and Wales) (Amendment) Regulations 2016' which come into force on 3 March 2016. In accordance with the above regulations, this list replaces the notice that was provided to Natural Resources Wales under previous legislation, the title of which was the 'Shellfish Waters (Wales) Notice 2013'.

SCHEDULE

Coastal and brackish waters in Wales to which the classification of Shellfish Water applies

Beddmanarch Bay - Shellfish Water



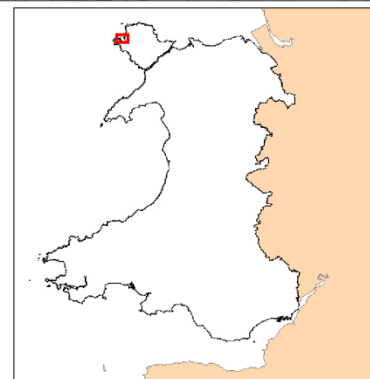
 Designated Shellfish Water

The Water Environment
(Water Framework Directive)
(England and Wales) (Amendment)
Regulations 2016

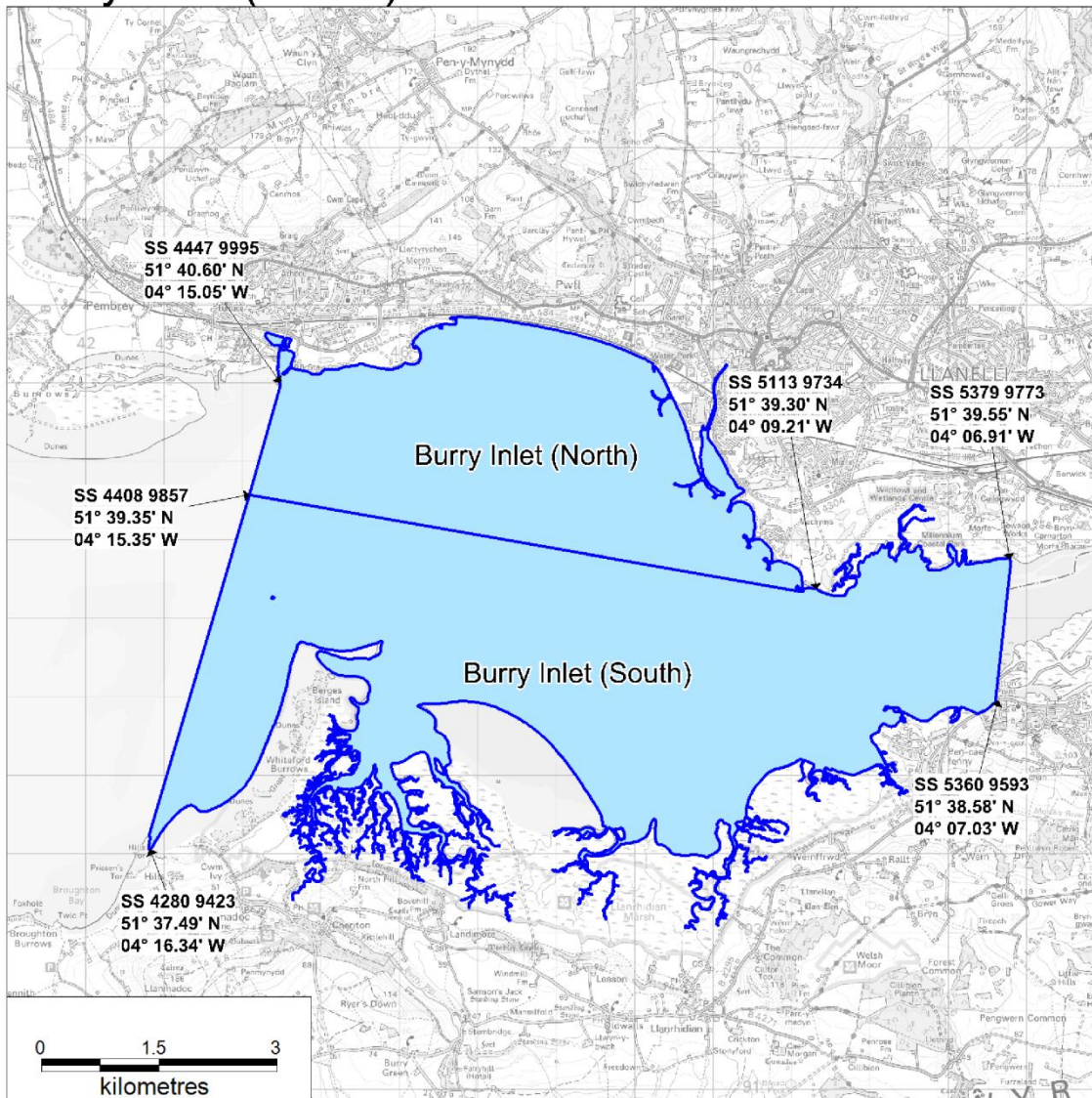
Map as produced by Cefas for the purposes of the
Surface Waters (Shellfish) (Classification) (Amendment) Regulations 2009

© Crown Copyright and Database 2013. All rights reserved.
Ordnance Survey licence number 10000356745

© Hawlfraint a hawliau cronfa ddata'r Goron 2013. Cedwir pob hawl.
Rhif Trwydded yr Arolwg Ordnans 10000356745



Burry Inlet (North), Burry Inlet (South) - Shellfish Waters



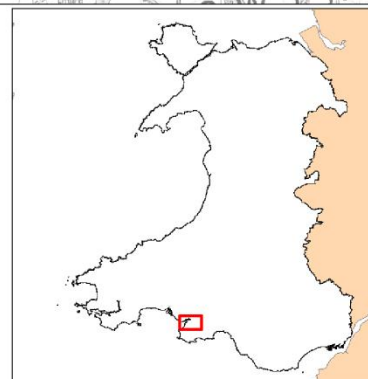
 Designated Shellfish Water

The Water Environment
(Water Framework Directive)
(England and Wales) (Amendment)
Regulations 2016

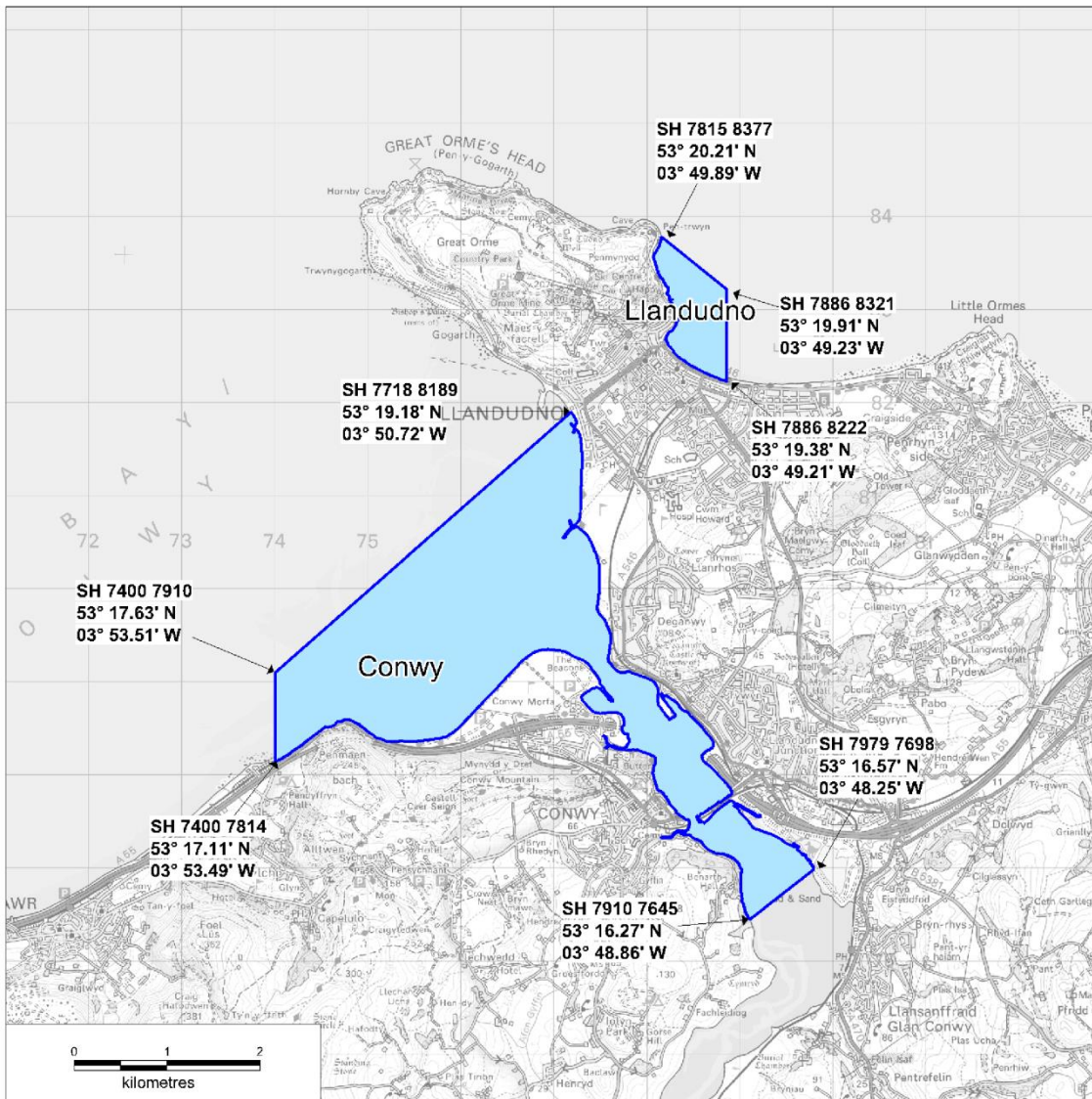
Map as produced by Cefas for the purposes of the
Surface Waters (Shellfish) (Classification) (Amendment) Regulations 2009

© Crown Copyright and Database 2013. All rights reserved.
Ordnance Survey licence number 10000356745

© Hawlfraint a hawliau cronfa ddata'r Goron 2013. Cedwir pob hawl.
Rhif Trwydded yr Arolwg Ordnans 10000356745



Conwy, Llandudno - Shellfish Waters



 Designated Shellfish Water

The Water Environment
(Water Framework Directive)
(England and Wales) (Amendment)
Regulations 2016

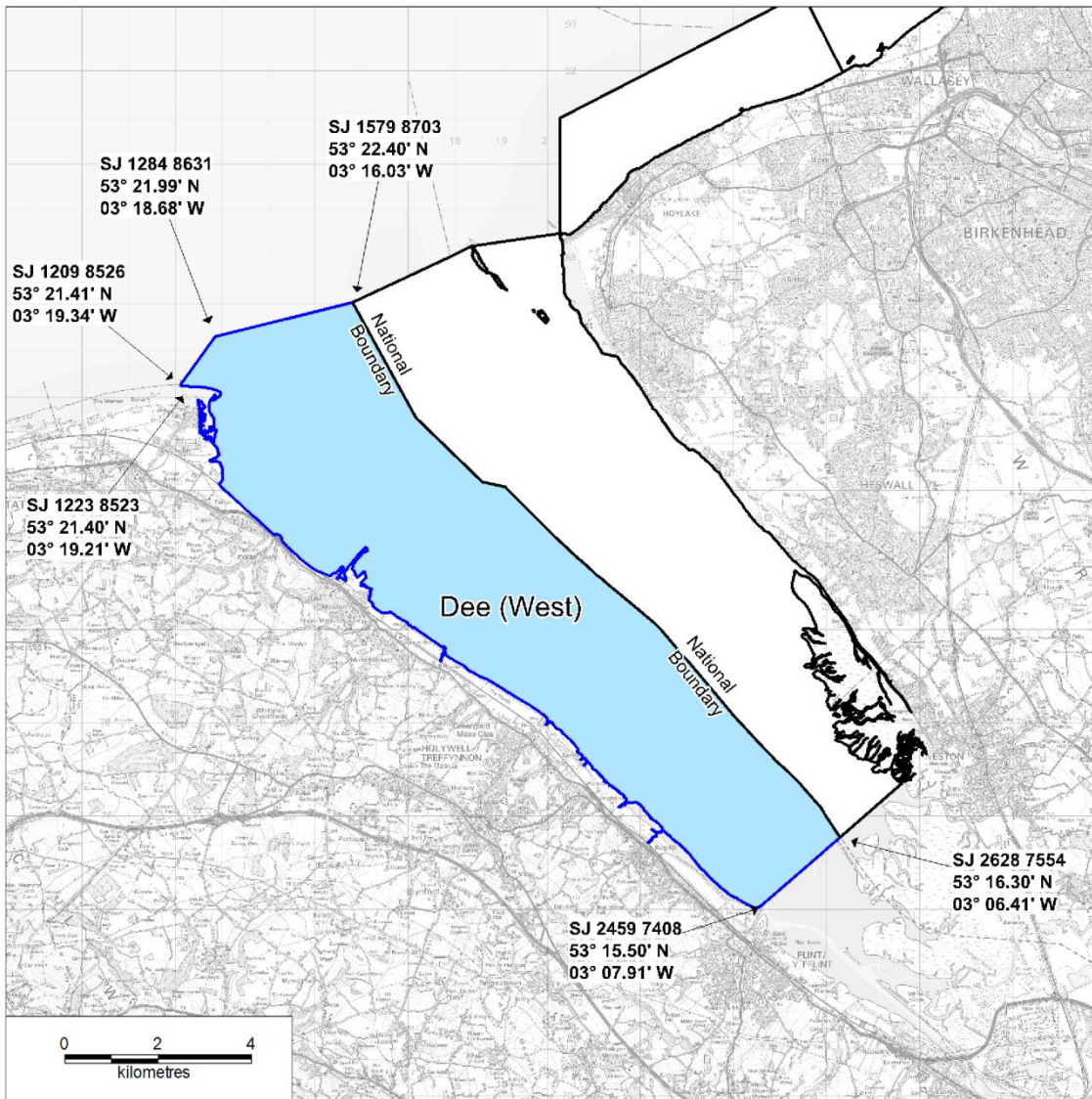
Map as produced by Cefas for the purposes of the
Surface Waters (Shellfish) (Classification) (Amendment) Regulations 2009

© Crown Copyright and Database 2013. All rights reserved.
Ordnance Survey licence number 10000356745

© Hawlfraint a hawliau cronfa ddata'r Goron 2013. Cedwir pob hawl.
Rhif Trwydded yr Arolwg Ordnans 10000356745



Dee (West) - Shellfish Water



 Designated Shellfish Water

The Water Environment
(Water Framework Directive)
(England and Wales) (Amendment)
Regulations 2016

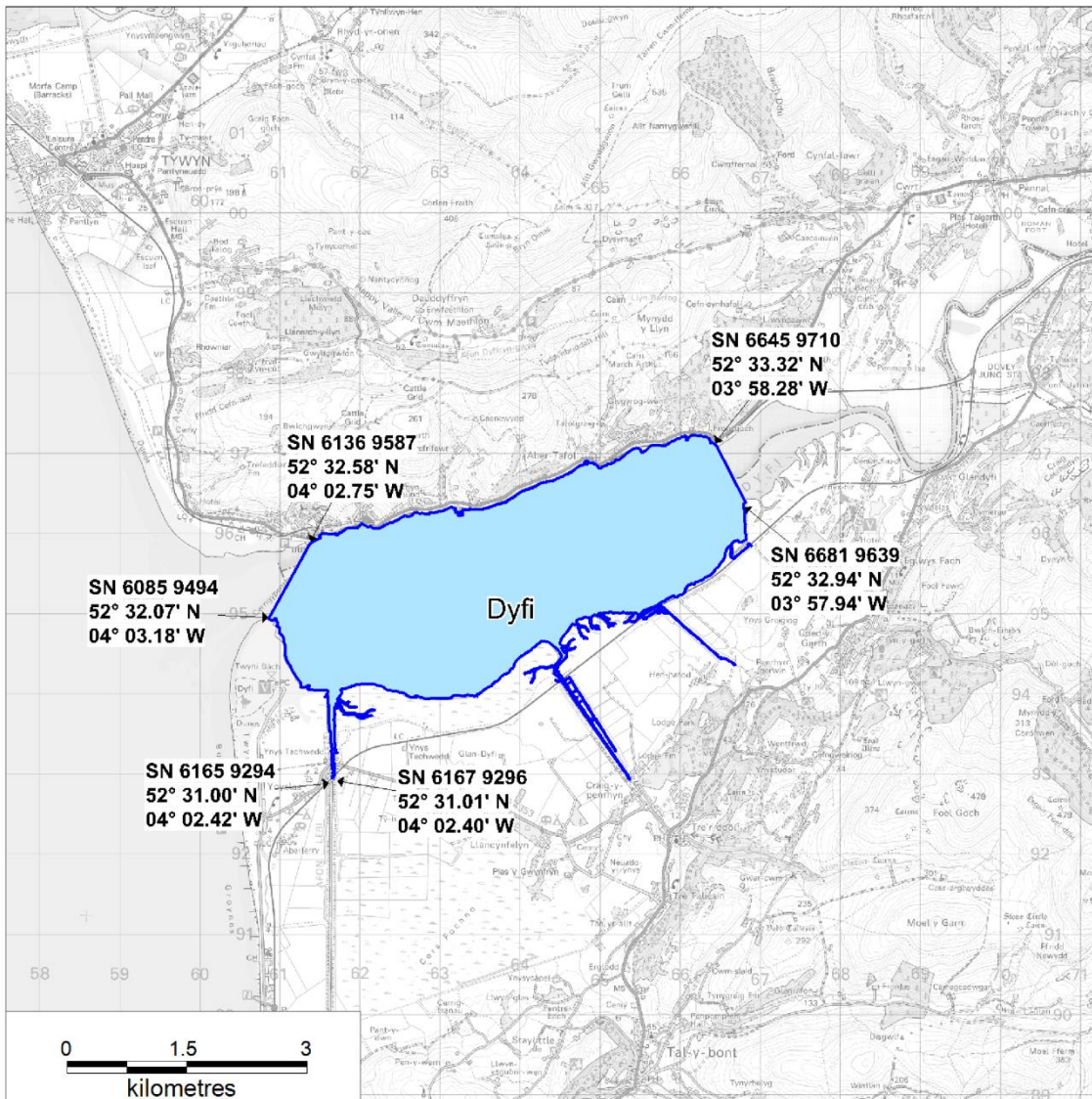
Map as produced by Cefas for the purposes of the
Surface Waters (Shellfish) (Classification) (Amendment) Regulations 2009

© Crown Copyright and Database 2013. All rights reserved.
Ordnance Survey licence number 10000356745

© Hawlfraint a hawliau cronfa ddata'r Goron 2013. Cedwir pob hawl.
Rhif Trwydded yr Arolwg Ordnans 10000356745



Dyfi (Dovey) - Shellfish Water



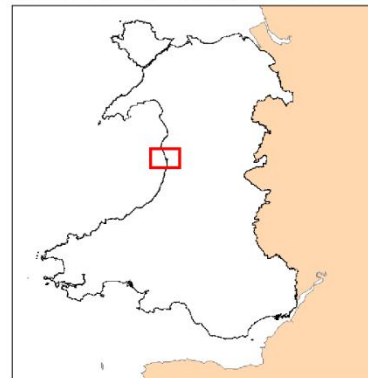
 Designated Shellfish Water

The Water Environment
(Water Framework Directive)
(England and Wales) (Amendment)
Regulations 2016

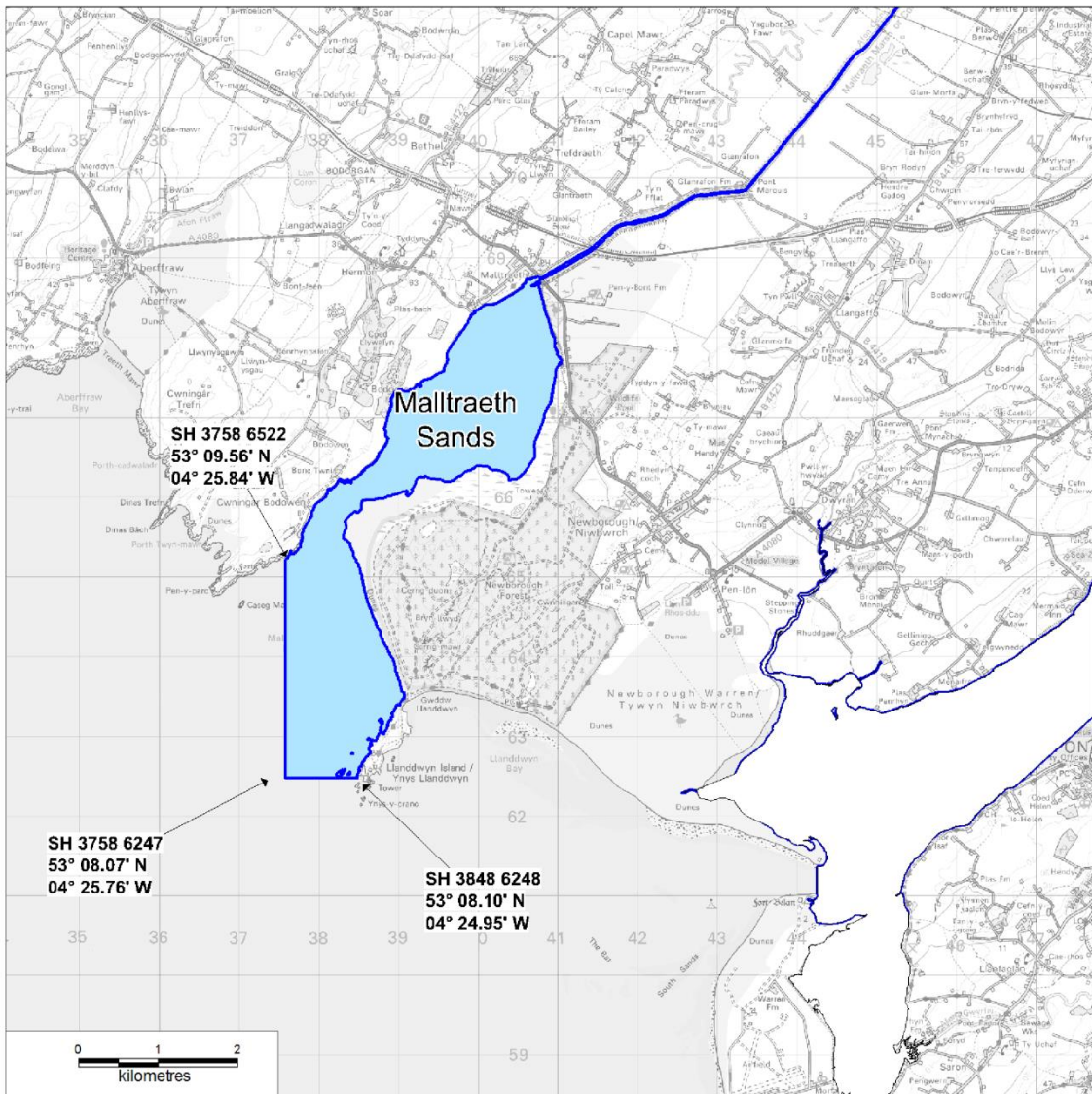
Map as produced by Cefas for the purposes of the
Surface Waters (Shellfish) (Classification) (Amendment) Regulations 2009

© Crown Copyright and Database 2013. All rights reserved.
Ordnance Survey licence number 10000356745

© Hawlfraint a hawliau cronfa ddata'r Goron 2013. Cedwir pob hawl.
Rhif Trwydded yr Arolwg Ordnans 10000356745



Malltraeth Sands - Shellfish Water



 Designated Shellfish Water

The Water Environment
(Water Framework Directive)
(England and Wales) (Amendment)
Regulations 2016

Map as produced by Cefas for the purposes of the
Surface Waters (Shellfish) (Classification) (Amendment) Regulations 2009

© Crown Copyright and Database 2013. All rights reserved.
Ordnance Survey licence number 10000356745

© Hawlfraint a hawliau cronfa ddata'r Goron 2013. Cedwir pob hawl.
Rhif Trwydded yr Arolwg Ordnans 10000356745



Llywodraeth Cymru
Welsh Government



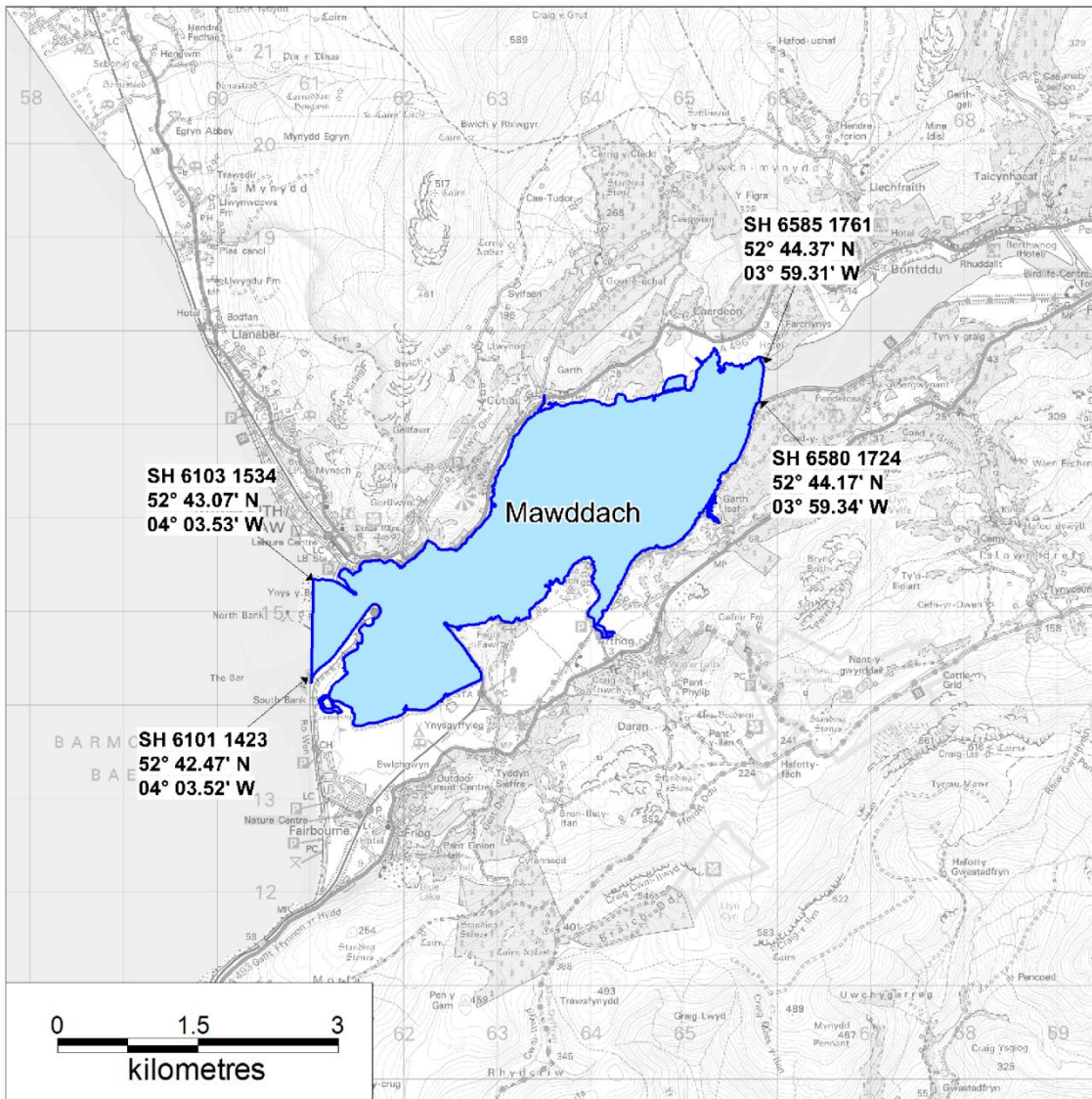
Cyfoeth Naturiol
Cymru
Natural Resources
Wales



Cefas



Mawddach- Shellfish Water



 Designated Shellfish Water

The Water Environment
(Water Framework Directive)
(England and Wales) (Amendment)
Regulations 2016

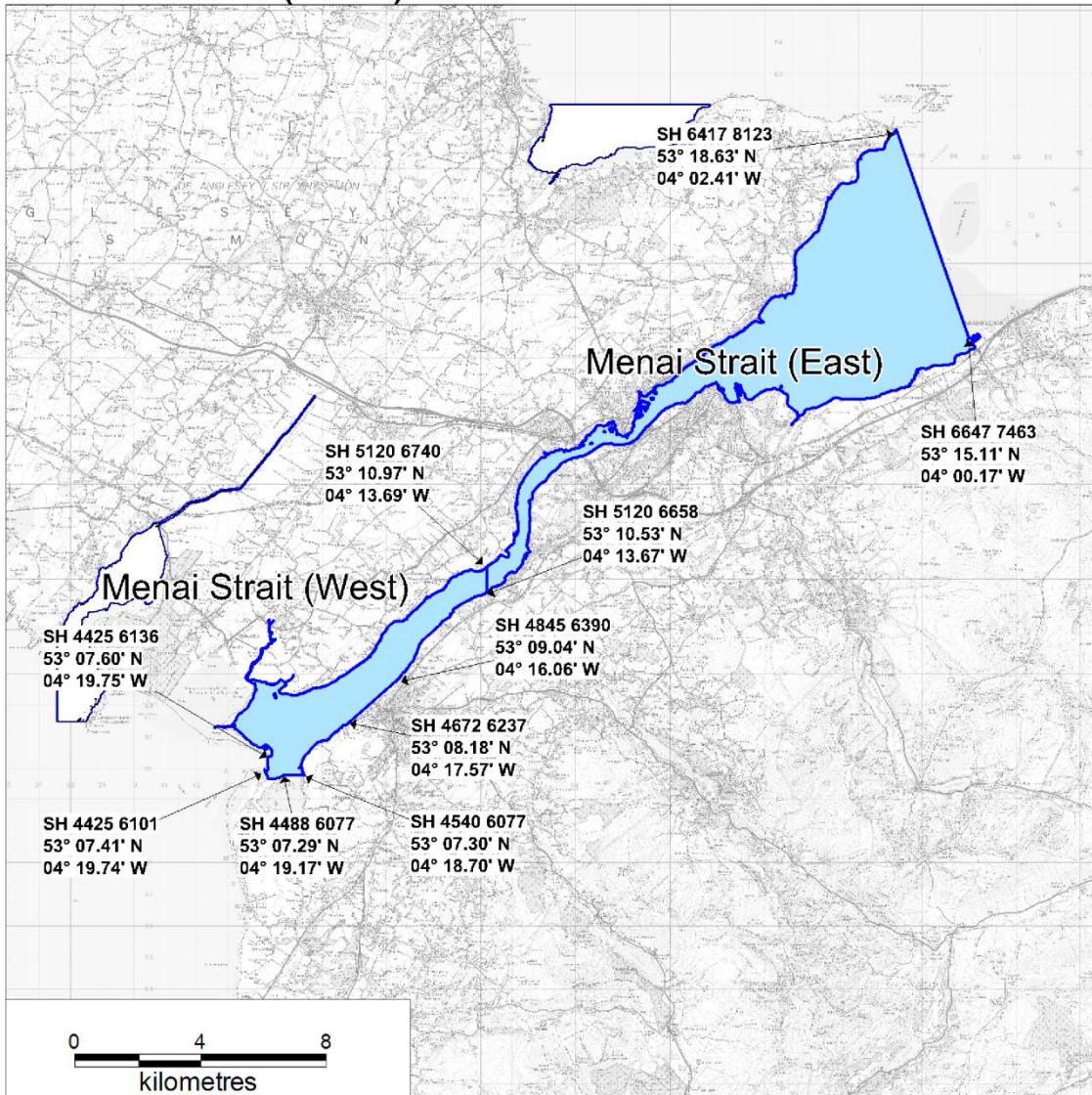
Map as produced by Cefas for the purposes of the
Surface Waters (Shellfish) (Classification) (Amendment) Regulations 2009

© Crown Copyright and Database 2013. All rights reserved.
Ordnance Survey licence number 10000356745

© Hawlfraint a hawliau cronfa ddata'r Goron 2013. Cedwir pob hawl.
Rhif Trwydded yr Arolwg Ordnans 10000356745



Menai Strait (West), Menai Strait (East) - Shellfish Waters



 Designated Shellfish Water

The Water Environment
(Water Framework Directive)
(England and Wales) (Amendment)
Regulations 2016

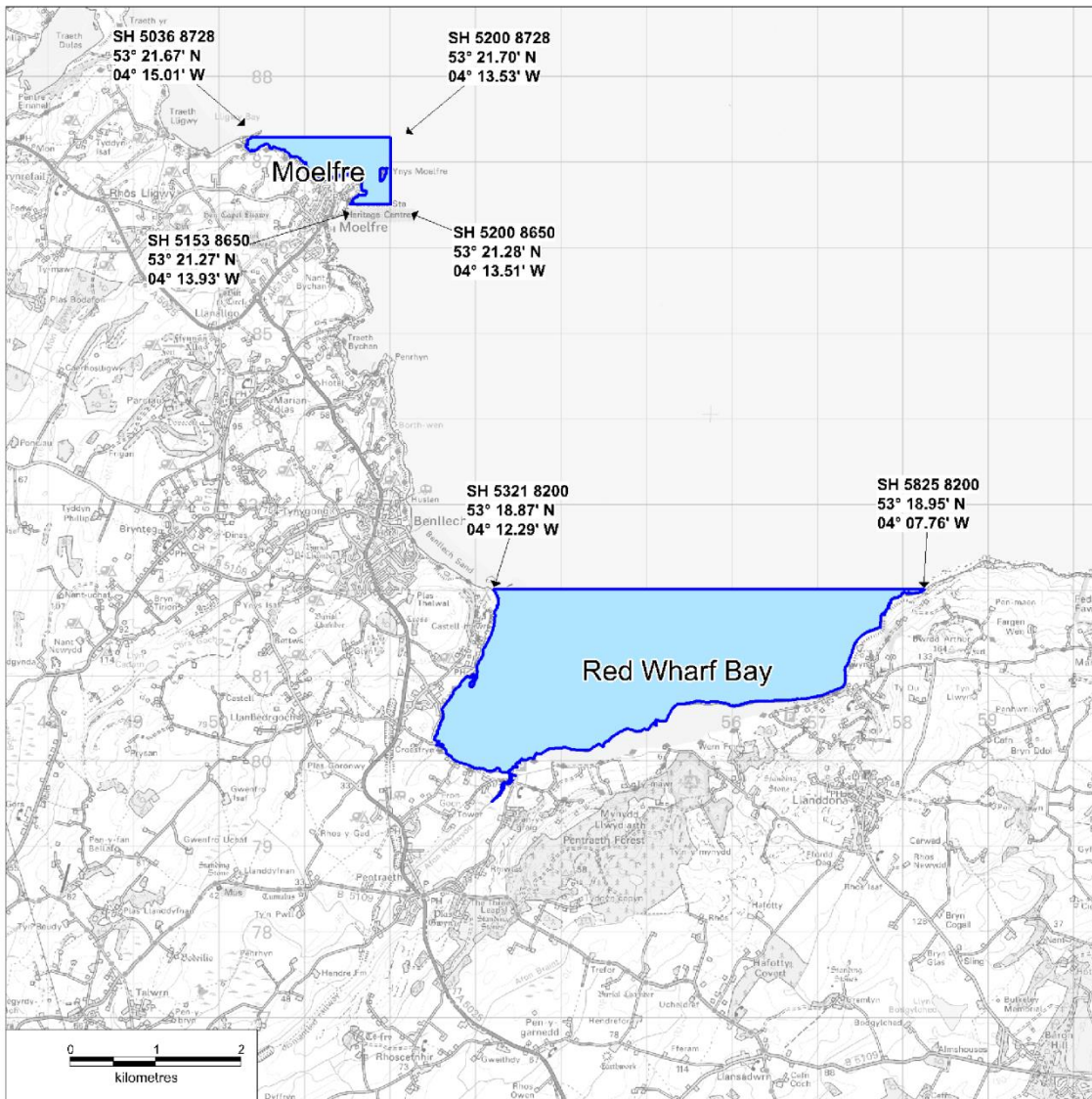
Map as produced by Cefas for the purposes of the
Surface Waters (Shellfish) (Classification) (Amendment) Regulations 2009

© Crown Copyright and Database 2013. All rights reserved.
Ordnance Survey licence number 10000356745

© Hawlfraint a hawliau cronfa ddata'r Goron 2013. Cedwir pob hawl.
Rhif Trwydded yr Arolwg Ordnans 10000356745



Red Wharf Bay, Moelfre - Shellfish Waters



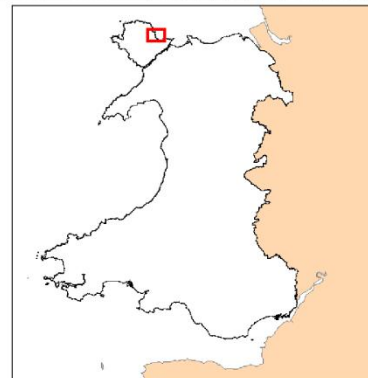
 Designated Shellfish Water

The Water Environment
(Water Framework Directive)
(England and Wales) (Amendment)
Regulations 2016

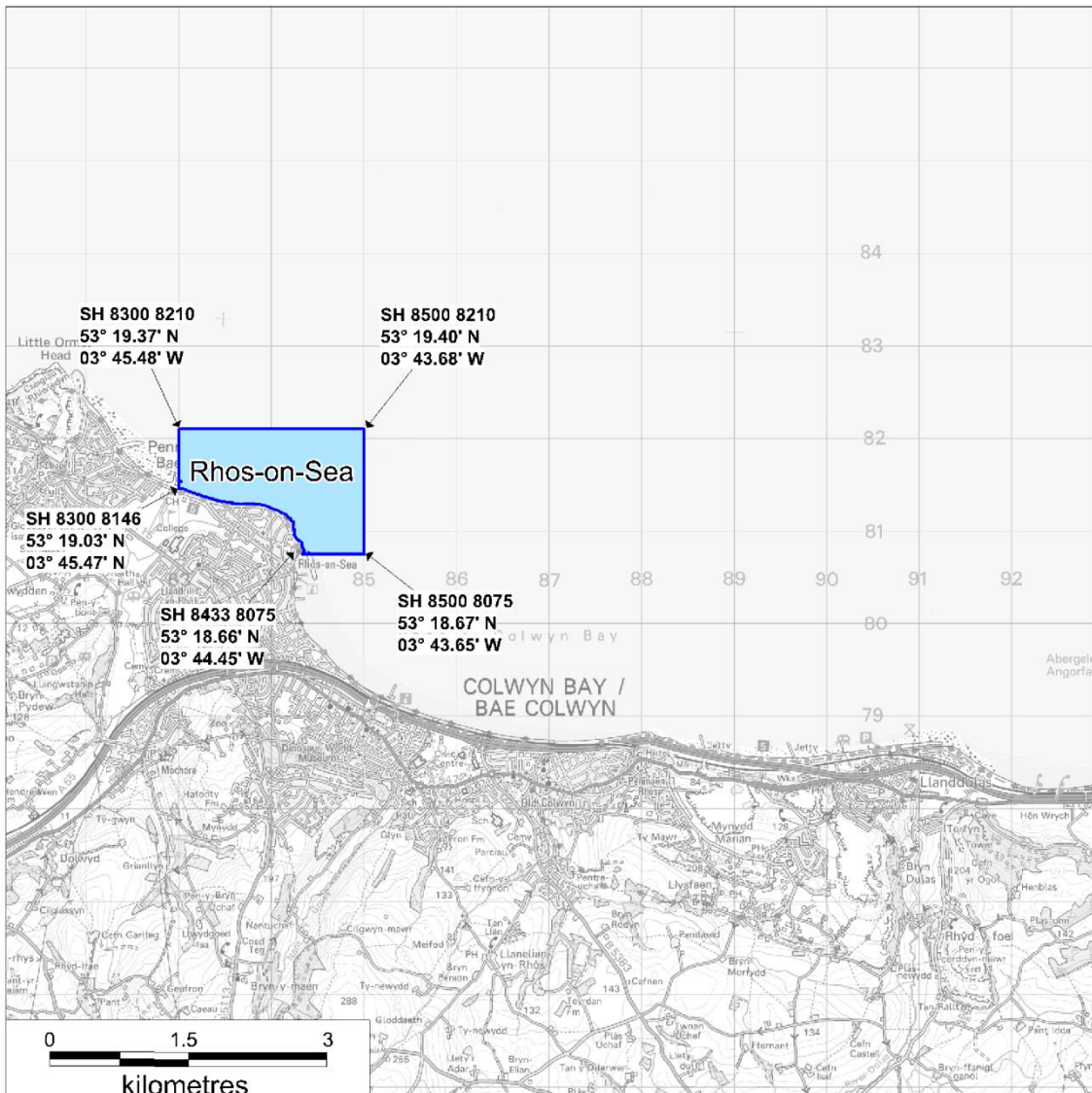
Map as produced by Cefas for the purposes of the
Surface Waters (Shellfish) (Classification) (Amendment) Regulations 2009

© Crown Copyright and Database 2013. All rights reserved.
Ordnance Survey licence number 10000356745

© Hawlfraint a hawliau cronfa ddata'r Goron 2013. Cedwir pob hawl.
Rhif Trwydded yr Arolwg Ordnans 10000356745



Rhos-on-Sea - Shellfish Water



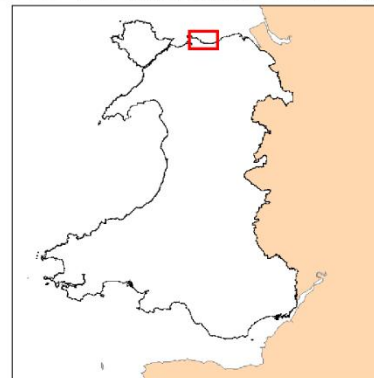
 Designated Shellfish Water

The Water Environment
(Water Framework Directive)
(England and Wales) (Amendment)
Regulations 2016

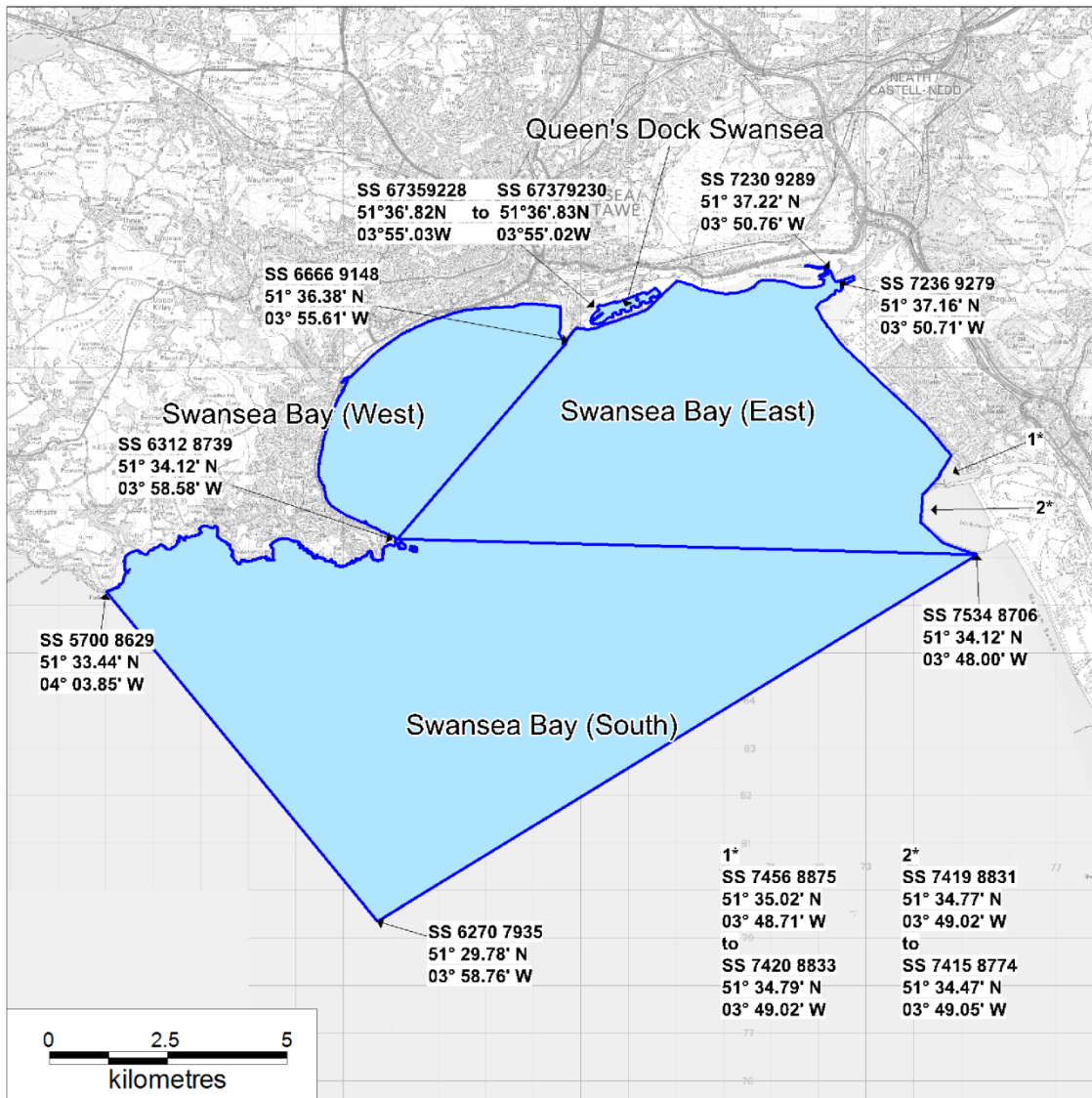
Map as produced by Cefas for the purposes of the
Surface Waters (Shellfish) (Classification) (Amendment) Regulations 2009

© Crown Copyright and Database 2013. All rights reserved.
Ordnance Survey licence number 10000356745

© Hawlfraint a hawliau cronfa ddata'r Goron 2013. Cedwir pob hawl.
Rhif Trwydded yr Arolwg Ordnans 10000356745



Swansea Bay (East), Swansea Bay (South) Swansea Bay (West), Queen's Dock Swansea - Shellfish Waters



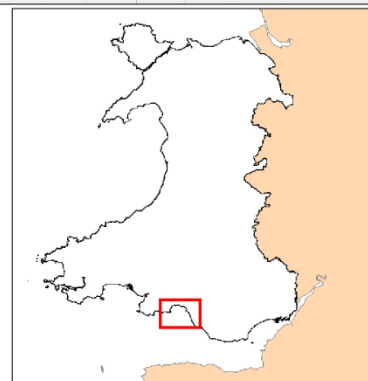
 Designated Shellfish Water

The Water Environment
(Water Framework Directive)
(England and Wales) (Amendment)
Regulations 2016

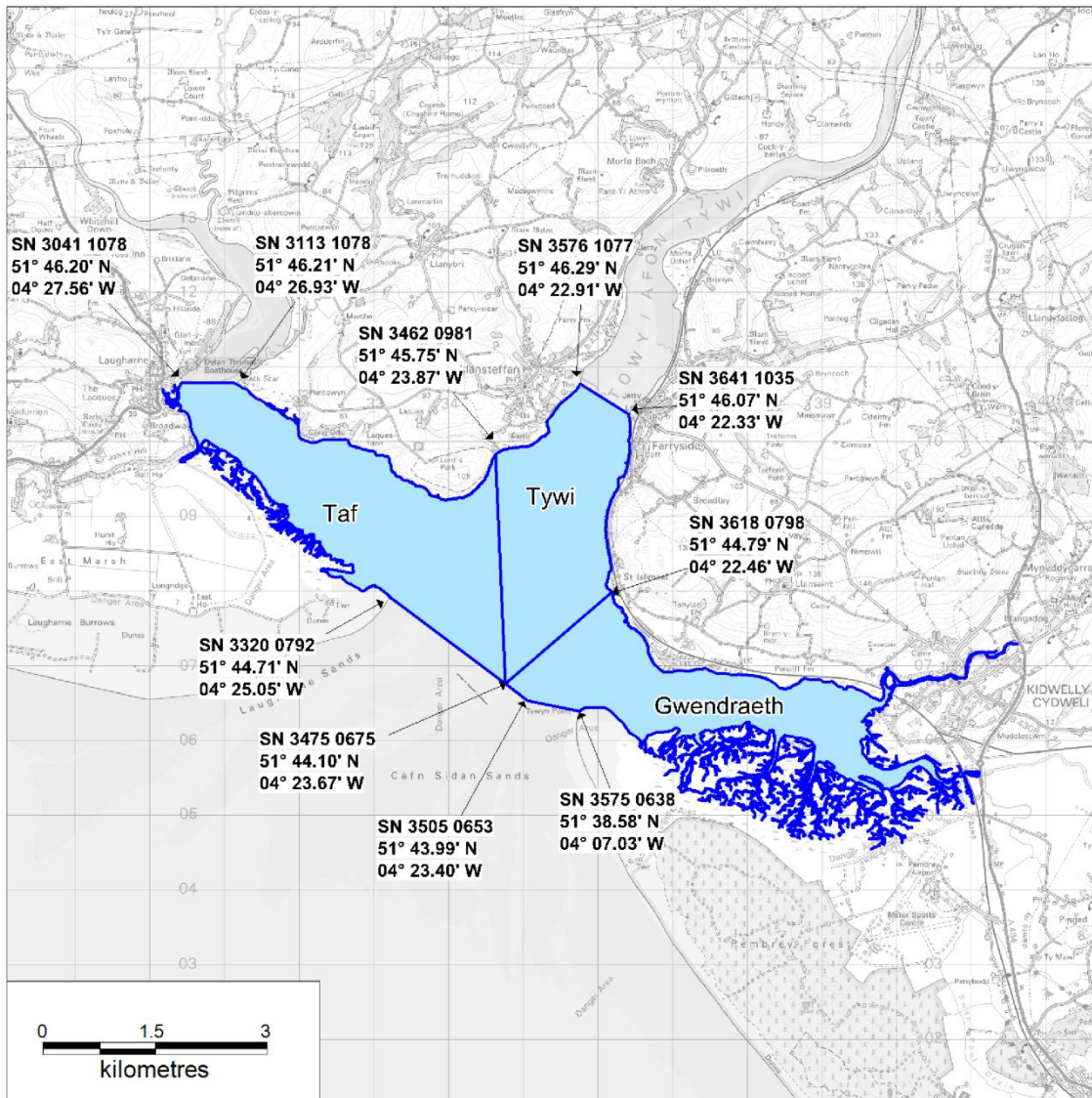
Map as produced by Cefas for the purposes of the
Surface Waters (Shellfish) (Classification) (Amendment) Regulations 2009

© Crown Copyright and Database 2013. All rights reserved.
Ordnance Survey licence number 10000356745

© Hawlfraint a hawliau cronfa ddata'r Goron 2013. Cedwir pob hawl.
Rhif Trwydded yr Arolwg Ordnans 10000356745



Gwendraeth, Tywi, Taf - Shellfish Waters



 Designated Shellfish Water

The Water Environment
(Water Framework Directive)
(England and Wales) (Amendment)
Regulations 2016

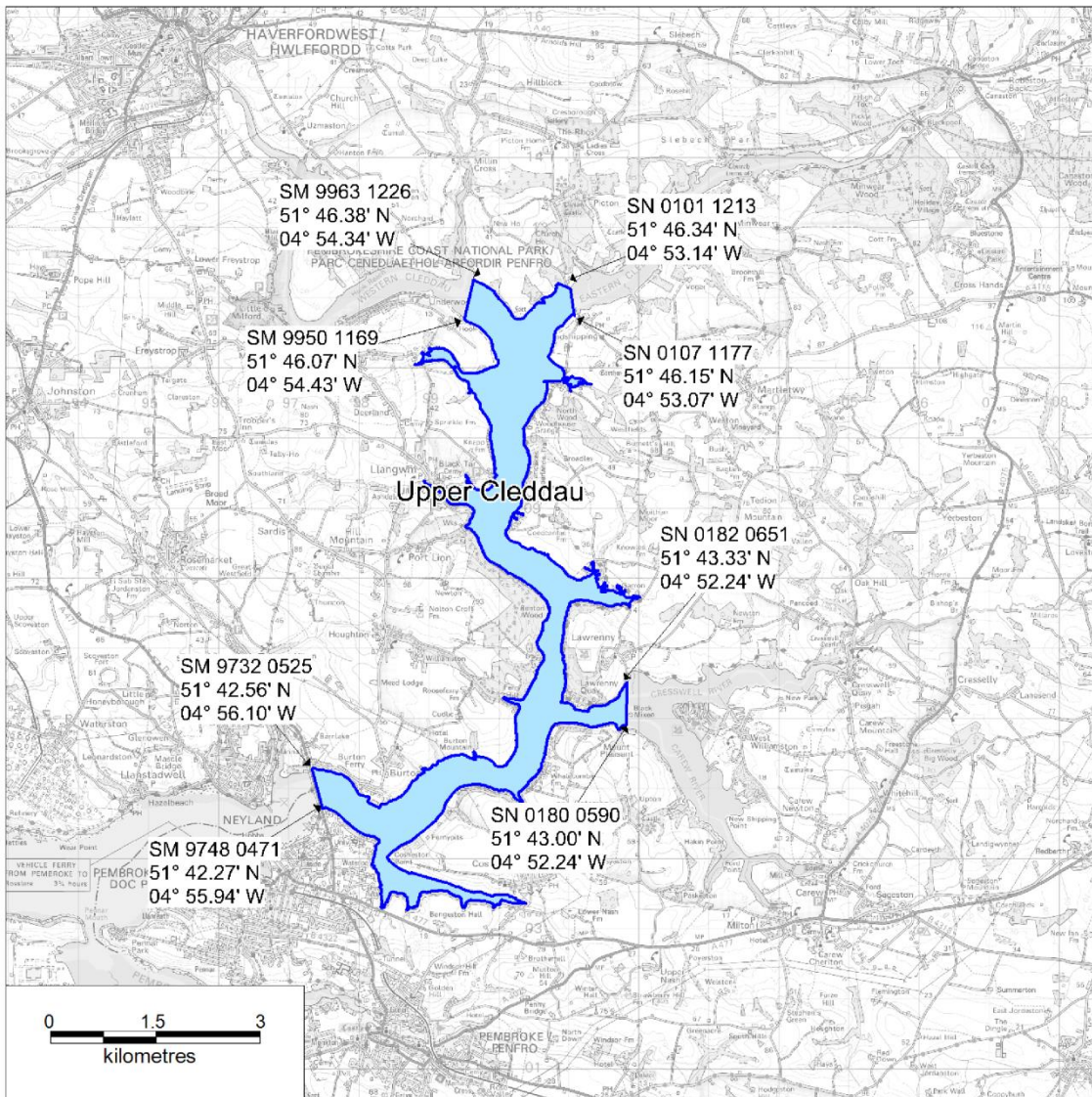
Map as produced by Cefas for the purposes of the
Surface Waters (Shellfish) (Classification) (Amendment) Regulations 2009

© Crown Copyright and Database 2013. All rights reserved.
Ordnance Survey licence number 10000356745

© Hawlfraint a hawliau cronfa ddata'r Goron 2013. Cedwir pob hawl.
Rhif Trwydded yr Arolwg Ordnans 10000356745



Upper Cleddau - Shellfish Water



 Designated Shellfish Water

The Water Environment
(Water Framework Directive)
(England and Wales) (Amendment)
Regulations 2016

Map as produced by Cefas for the purposes of the
Surface Waters (Shellfish) (Classification) (Amendment) Regulations 2009

© Crown Copyright and Database 2013. All rights reserved.
Ordnance Survey licence number 10000356745

© Hawlfraint a hawliau cronfa ddata'r Goron 2013. Cedwir pob hawl.
Rhif Trwydded yr Arolwg Ordnans 10000356745

