

Anglesey Terns / Morwenoliaid Ynys Môn

Tudalen / Page **1 / 3** Côd Safle y GE / EC Site Code **UK9013061**

Ynys Feurig, Cemlyn Bay and The Skerries Ardal Gwarchodaeth Arbennig (AGA)
Ynys Feurig, Cemlyn Bay and The Skerries Special Protection Area (SPA)

Ardal Gwarchodaeth Arbennig arfaethedig (AGAA) **potential Special Protection Area (pSPA)**

Ardaloedd Gwarchodaeth Arbennig Eraill (AGA) **Other Special Protection Areas (SPA)**

AGA bresennol **Existing SPA 85.98 ha**
AGA arfaethedig **Potential SPA 101,845.10 ha**
Arwynebedd cyfan **Total area 101,931.08 ha** (Bresennol ac Arfaethedig)
(Existing and Potential)

Hydred **Longitude -4.5122** gradd degol / decimal degrees
Lledred **Latitude 53.4118** gradd degol / decimal degrees



N.G. Mae'r ffigurau Lledred/Hydred i gyd wedi deillio o System Geodesig y Byd 84 (WGS 84)

N.B. All Latitude/Longitude figures have been derived from World Geodetic System 84 (WGS 84).

Tafuniad map: Y Grid Cenedlaethol Prydeinig
Projection: British National Grid

Rhif diweddaraf / Version number **1** 27/07/2015

Graddfa / Scale **1:300,000**



Noder: Data wedi ei gipio ar raddfa 1:2,500 a rhoddwyd ar raddfa 1:300,000. Mae mapiau graddfa-fawr swyddodol ar gael gan CNC. Mae graddfa'r map yn cywir pan argraffu yn A3.

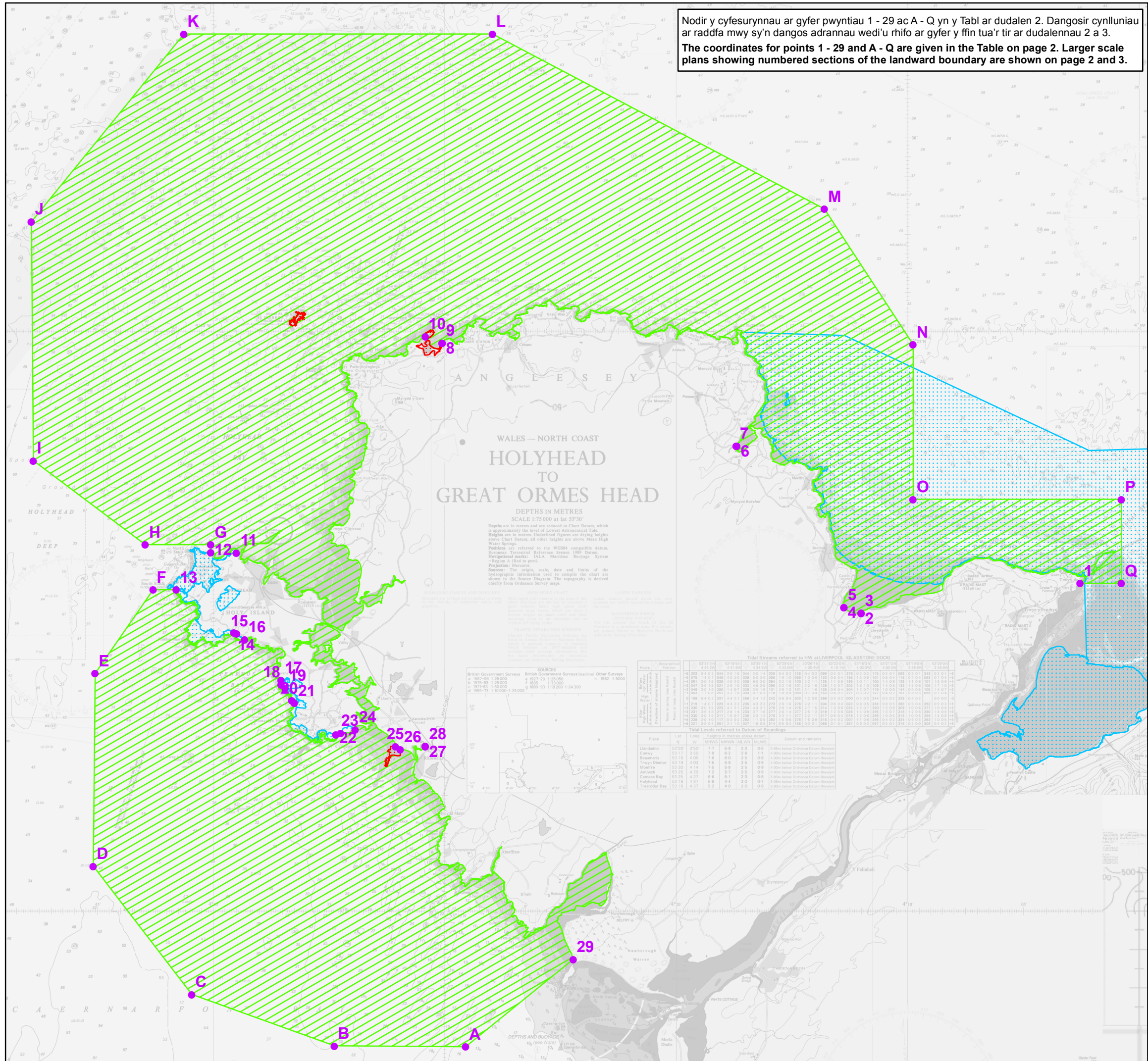
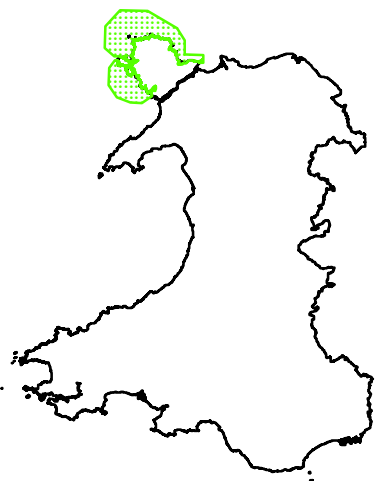
Note: Data captured at 1:2500 scale and placed on 1:300,000 scale. A definitive large scale map is available on request from NRW. The scale of this map is only correct when printed out at A3.

Noder: Gall y ffin newid lle mae'n dilyn llinell Marc Penllanw Cymhedrol ac/neu llinell Marc Distyll Cymhedrol.

Note: Where the boundary follows the lines of Mean High and/or Mean Low Water Marks it is subject to change.

© Coron Prydeinig ac Oceanwise Cyf. Cedwir pob hawl. Rhif trwydded EK001-20120402
RHAID PEIDIO Â DEFNYDDIO HWN AR GYFER LLYWIO
© British Crown and Oceanwise Ltd. All rights reserved. Licence No. EK001-20120402
NOT TO BE USED FOR NAVIGATION

© Hawffraint y Goron a hawliau cronfa ddata 2015 Arolwg Ordnans 10009741.
© Crown Copyright and database rights 2015 Ordnance Survey 10009741.



Anglesey Terns / Morwenoliaid Ynys Môn

Ardal Gwarchodaeth Arbennig arfaethedig (AGAA)
potential Special Protection Area (pSPA)

Gweler drosodd am fap
See overleaf for map

Tudalen 2/3
Page

Pwynt Point	Hydred Longitude	Lledred Latitude	X	Y
A	-4.4850	53.1077	233,680	359,645
B	-4.5794	53.1081	227,386	359,864
C	-4.6822	53.1303	220,575	362,631
D	-4.7531	53.1859	216,072	368,989
E	-4.7516	53.2692	216,427	378,234
F	-4.7100	53.3053	219,455	382,163
G	-4.6683	53.3248	222,311	384,221
H	-4.7155	53.3248	219,167	384,340
I	-4.7961	53.3609	213,961	388,563
J	-4.7975	53.4637	214,314	399,997
K	-4.6877	53.5442	221,937	408,676
L	-4.4655	53.5442	236,658	408,143
M	-4.2266	53.4692	252,224	399,279
N	-4.1627	53.4109	256,267	392,660
O	-4.1627	53.3442	256,042	385,244
P	-4.0127	53.3442	266,027	384,952
Q	-4.0127	53.3081	265,913	380,935
1	-4.0423	53.3081	263,942	380,991
2	-4.2000	53.2953	253,389	379,876
3	-4.2001	53.2952	253,383	379,868
4	-4.2123	53.2978	252,582	380,184
5	-4.2123	53.2978	252,580	380,186
6	-4.2895	53.3673	247,687	388,074
7	-4.2900	53.3673	247,652	388,080
8	-4.5017	53.4117	233,741	393,485
9	-4.5016	53.4116	233,750	393,478
10	-4.5138	53.4144	232,951	393,812
11	-4.6498	53.3212	223,527	383,779
12	-4.6683	53.3214	222,297	383,842
13	-4.6933	53.3053	220,565	382,121
14	-4.6518	53.2868	223,254	379,962
15	-4.6496	53.2863	223,398	379,898
16	-4.6440	53.2838	223,763	379,607
17	-4.6176	53.2663	225,447	377,591
18	-4.6177	53.2643	225,437	377,377
19	-4.6148	53.2628	225,620	377,203
20	-4.6100	53.2574	225,920	376,586
21	-4.6080	53.2563	226,046	376,462
22	-4.5783	53.2427	227,973	374,877
23	-4.5749	53.2435	228,204	374,958
24	-4.5643	53.2448	228,920	375,074
25	-4.5353	53.2377	230,821	374,217
26	-4.5318	53.2364	231,050	374,058
27	-4.5139	53.2378	232,248	374,176
28	-4.5139	53.2377	232,253	374,165
29	-4.4074	53.1455	239,013	363,670

Ac eithrio pan nodir yn wahanol, mae ffin yr AGA bosibl yn dilyn y Marc Penllanw Cymedrig rhwng y pwyntiau canlynol:

- 1 ac 8
- 10 a 25
- 26 a 29
- 11 a 24 ar ochr ddwyreiniol Ynys Gybi
- 16 a 17

Ac eithrio pan nodir yn wahanol, mae ffin yr AGA bosibl yn dilyn y Marc Distyll Cymedrig rhwng y pwyntiau canlynol ac o gwmpas Ynys Seiriol:







- 11 a 12
- 13 a 16
- 17 a 24.

Except where otherwise shown, the boundary of the potential SPA follows Mean High Water Mark between the following points:

- 1 and 8
- 10 and 25
- 26 and 29
- 11 and 24 along the eastern side of Holy Island
- 16 and 17

Except where otherwise shown, the boundary of the potential SPA follows Mean Low Water Mark between the following points and around Puffin Island:

- 11 and 12
- 13 and 16
- 17 and 24

-  Ynys Feurig, Cemlyn Bay and The Skerries Ardal Gwarchodaeth Arbennig (AGA)
-  Ynys Feurig, Cemlyn Bay and The Skerries Special Protection Area (SPA)
-  Ardal Gwarchodaeth Arbennig arfaethedig (AGAA)
-  potential Special Protection Area (pSPA)
-  Ardaloedd Gwarchodaeth Arbennig Eraill (AGA)
-  Other Special Protection Areas (SPA)

Dangosir y pwyntiau wedi'u rhifo yn y mapiau mewnol canlynol ar y prif fap ar dudalen 1.
The numbered points in the following inset maps are shown on the main map on page 1.

